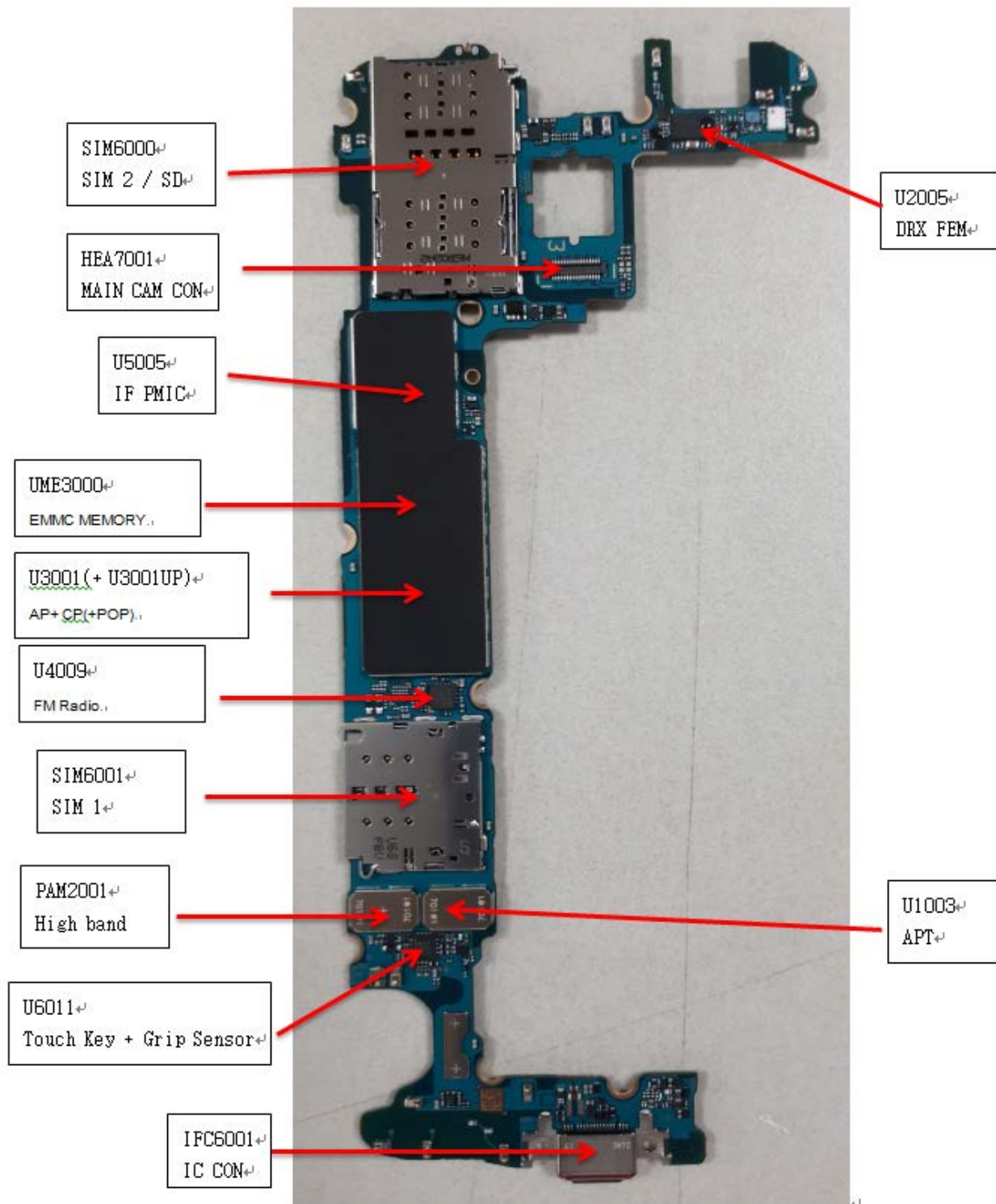


8. Level 3 Repair

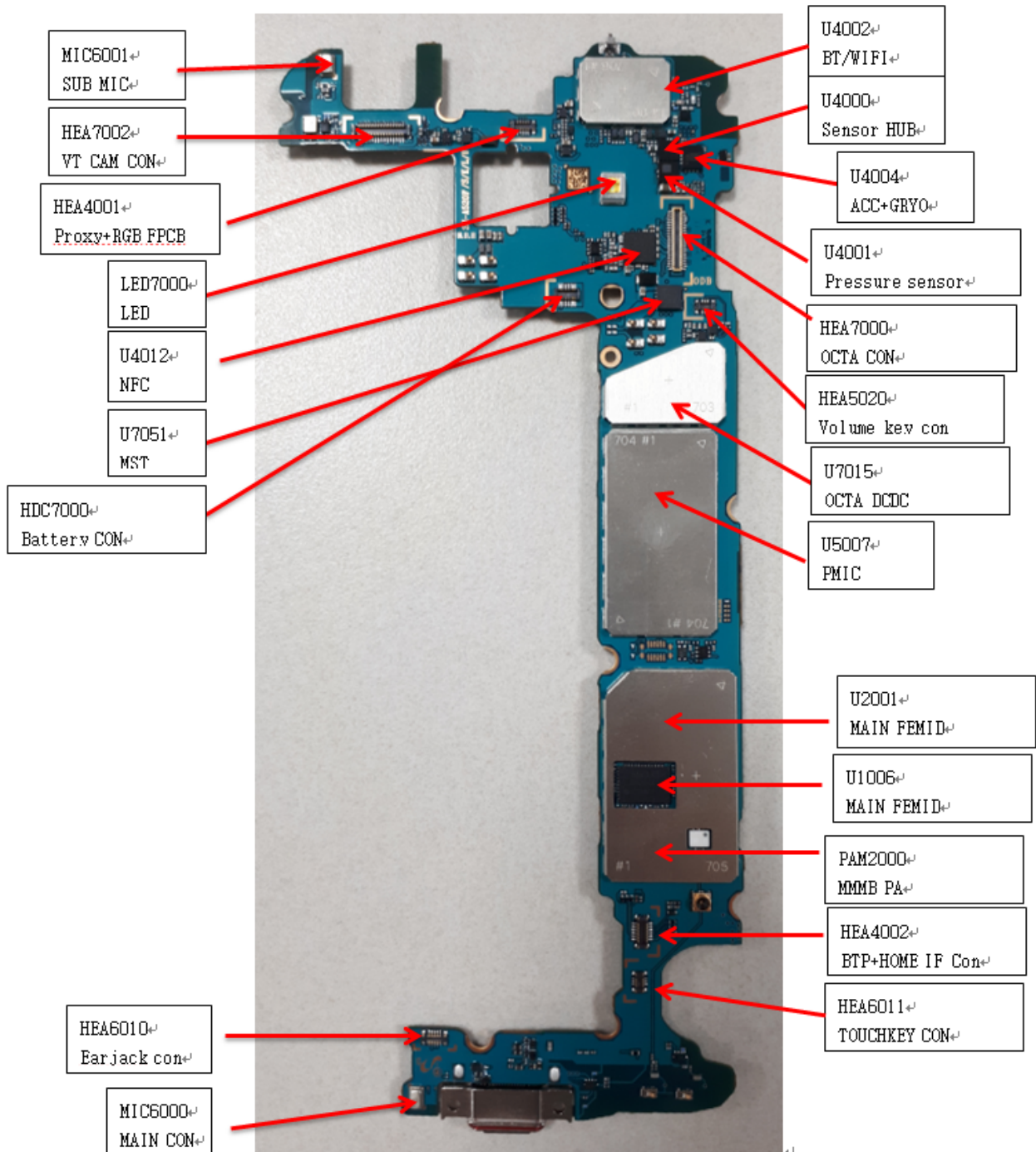
8-1. Components Layout

PBA TOP Side

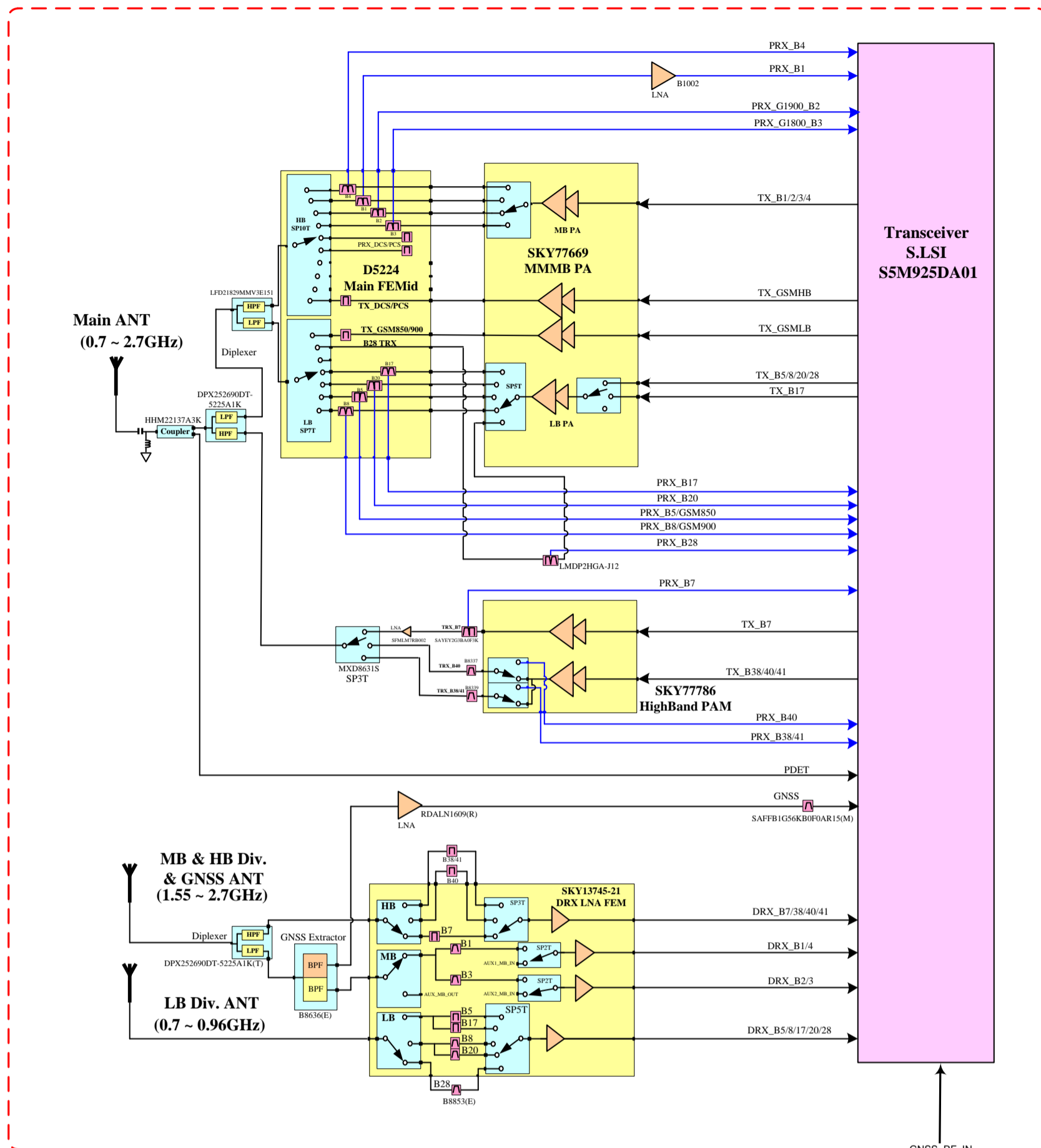


8. Level 3 Repair

PBA BOT Side

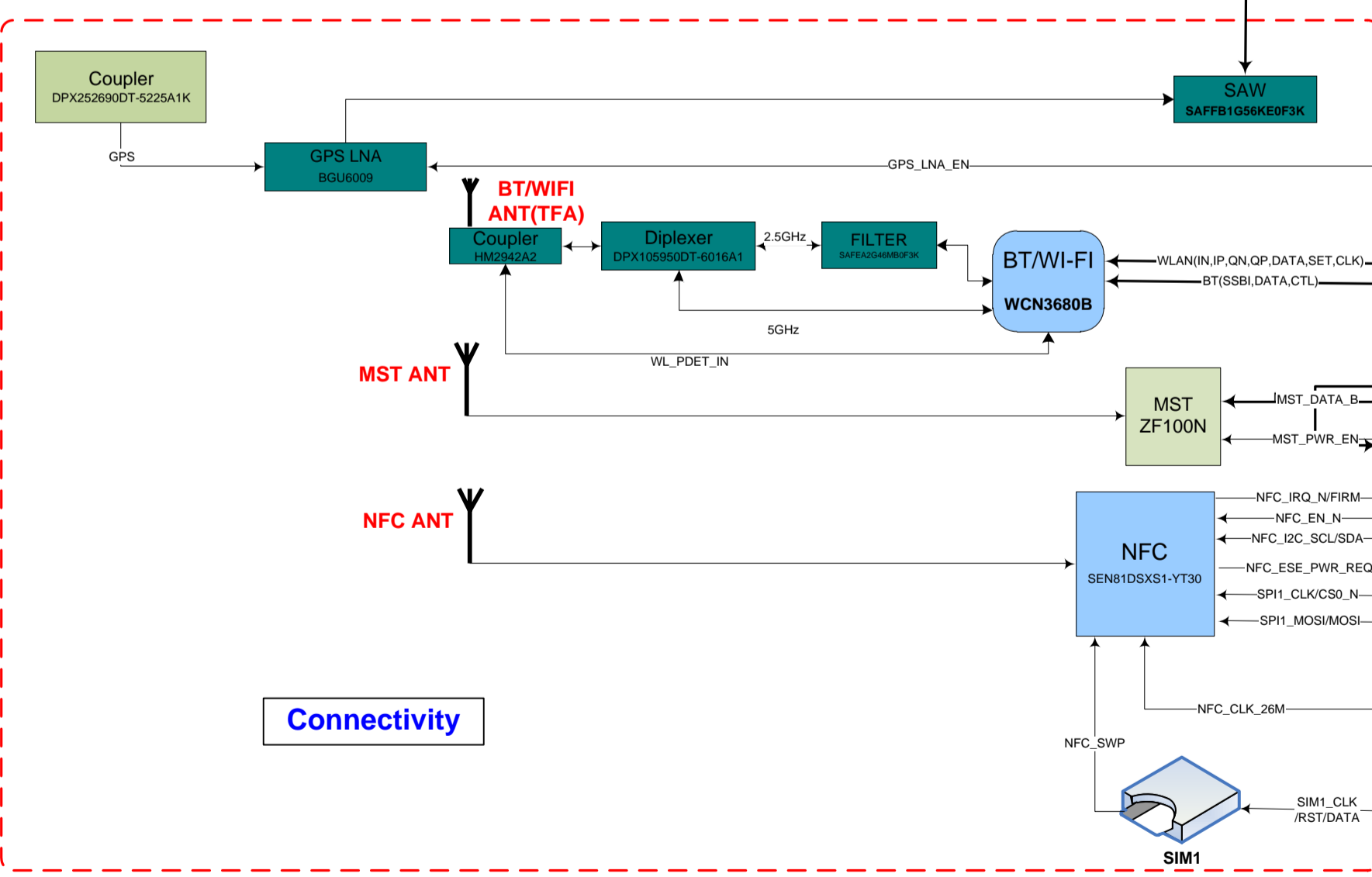


A5 2017(SM-A520F/DS) BLOCK DIAGRAM

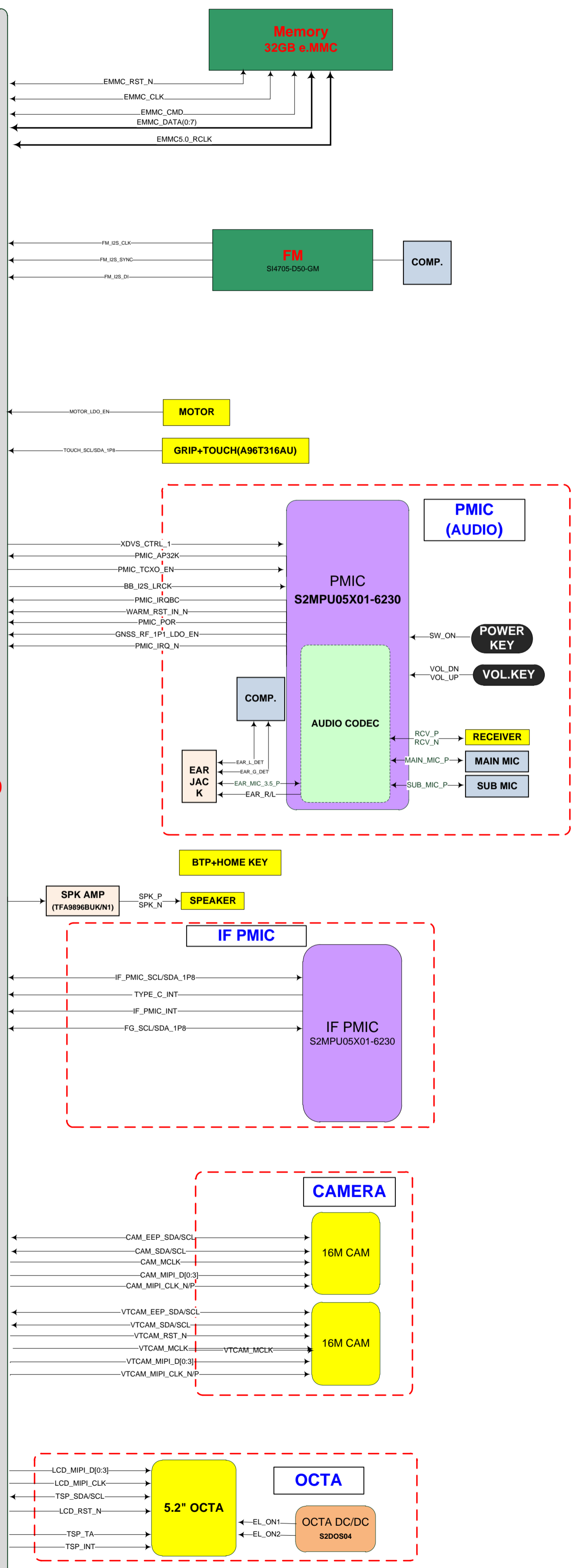
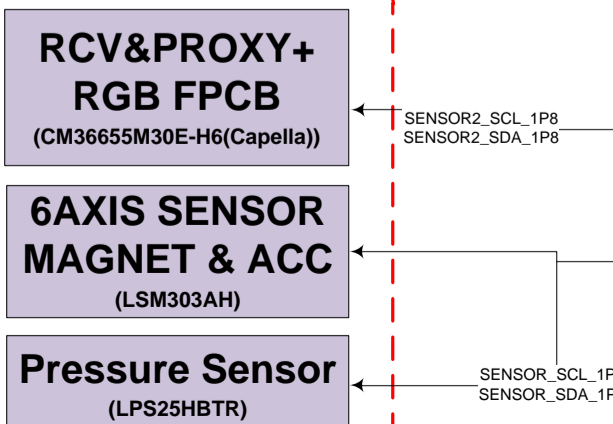


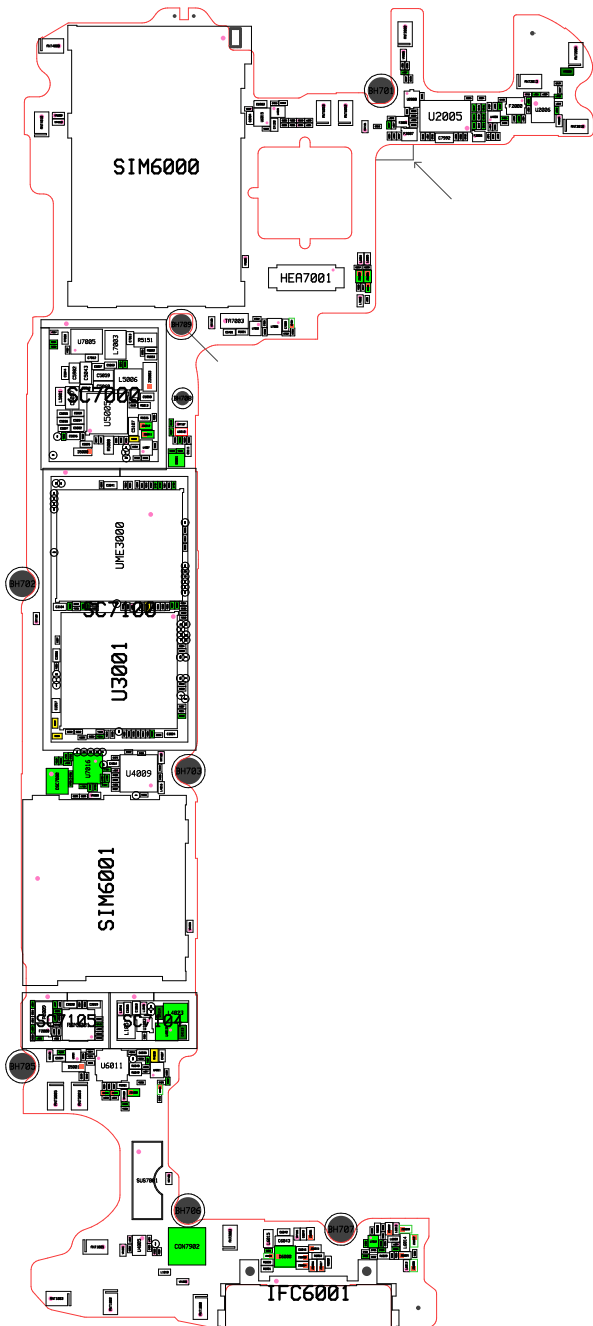
S5E7880 XFO-LA30 (CP+AP)

1.8GHz



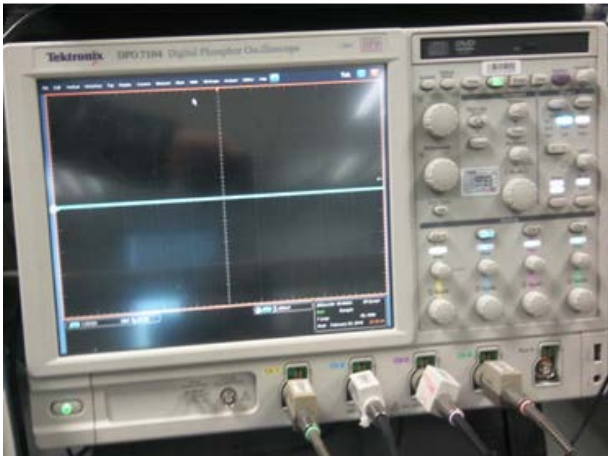
SENSOR





8. Level 3 Repair

8-3. Flow chart of Troubleshooting.



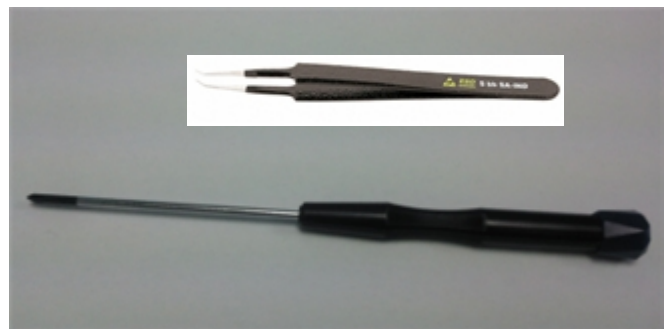
Oscilloscope



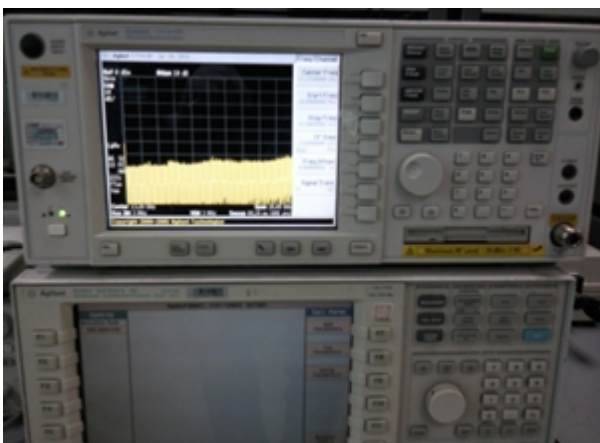
Digital Multimeter



Power Supply



+ driver, ESD Safe Tweezer



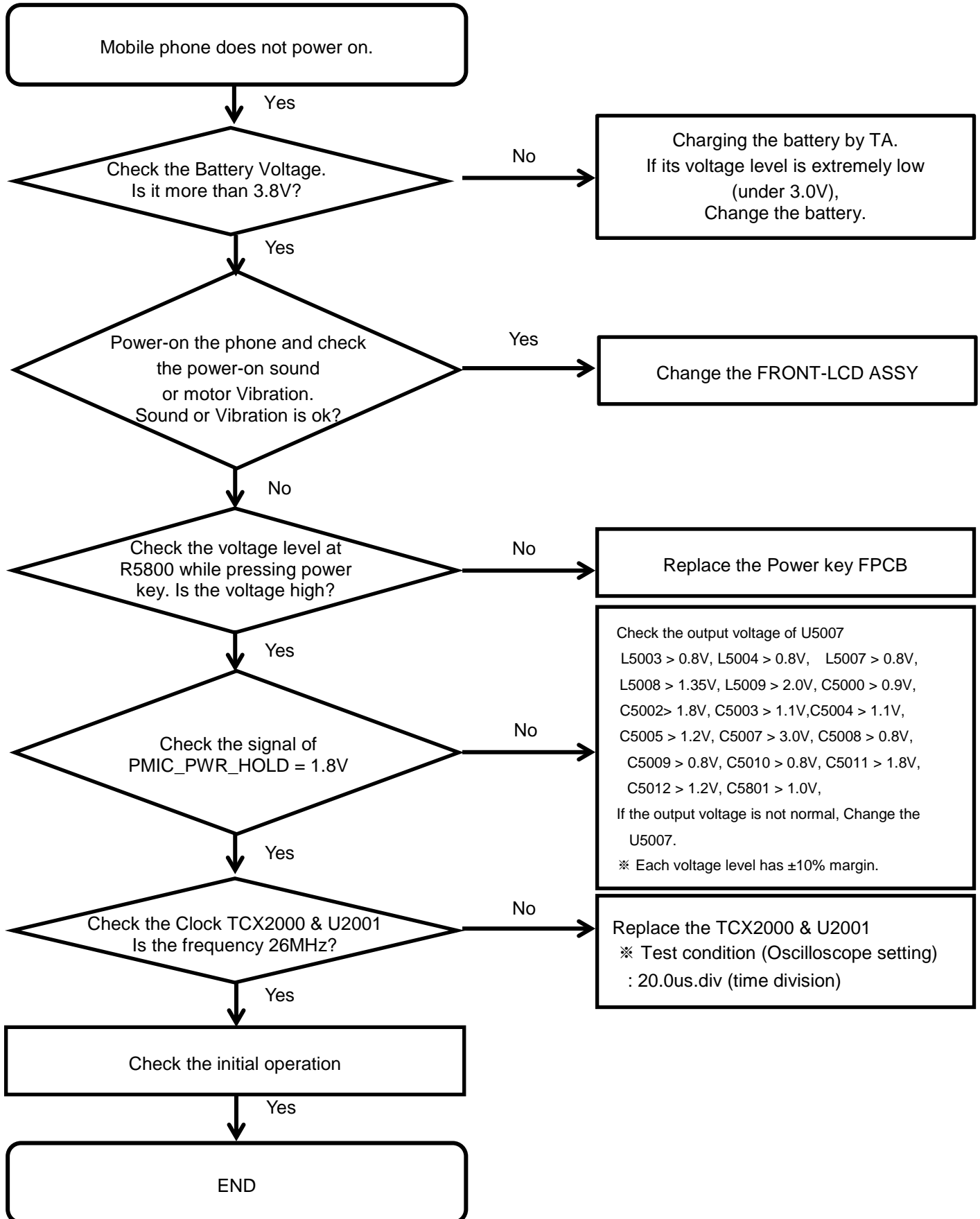
8960 & Spectrum Analyzer



Soldering iron

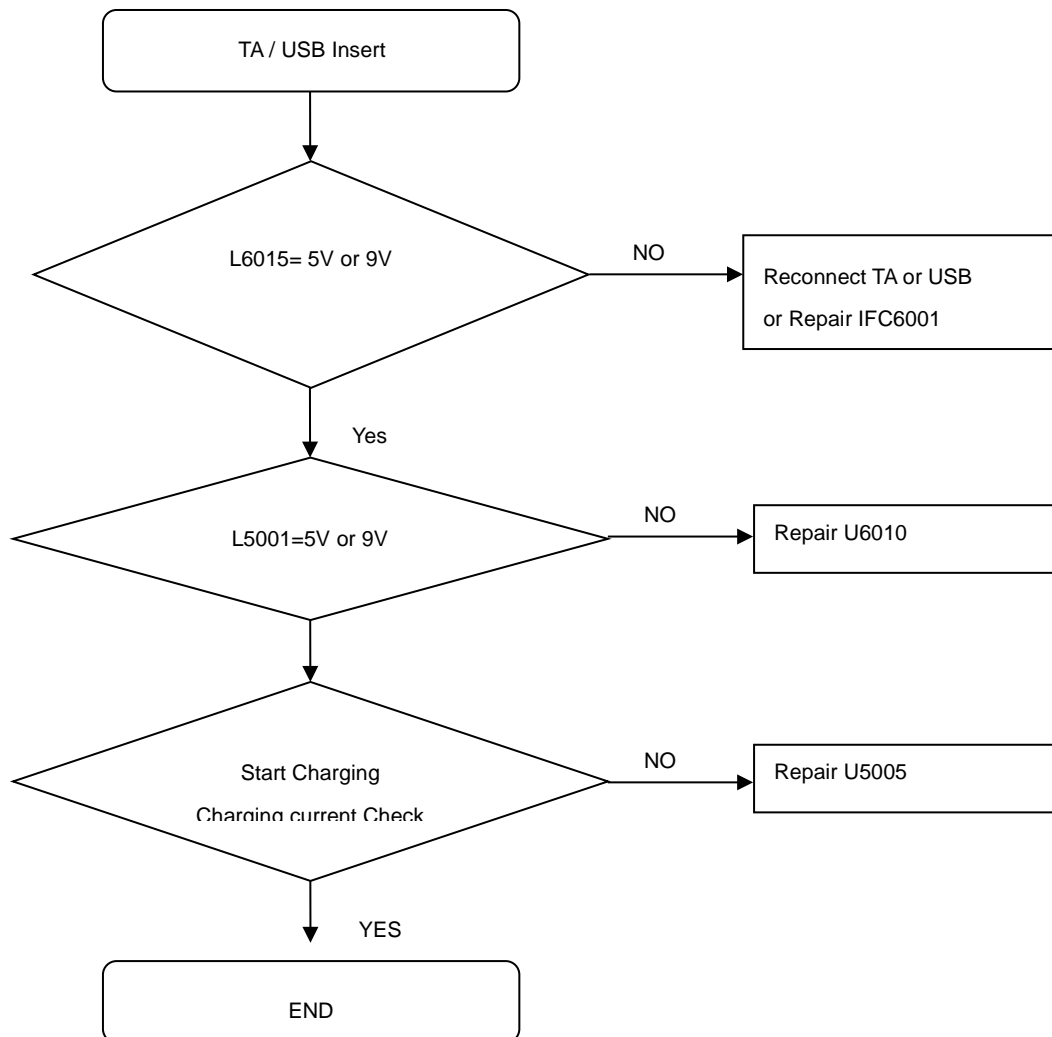
8. Level 3 Repair

8-4-1. Power on



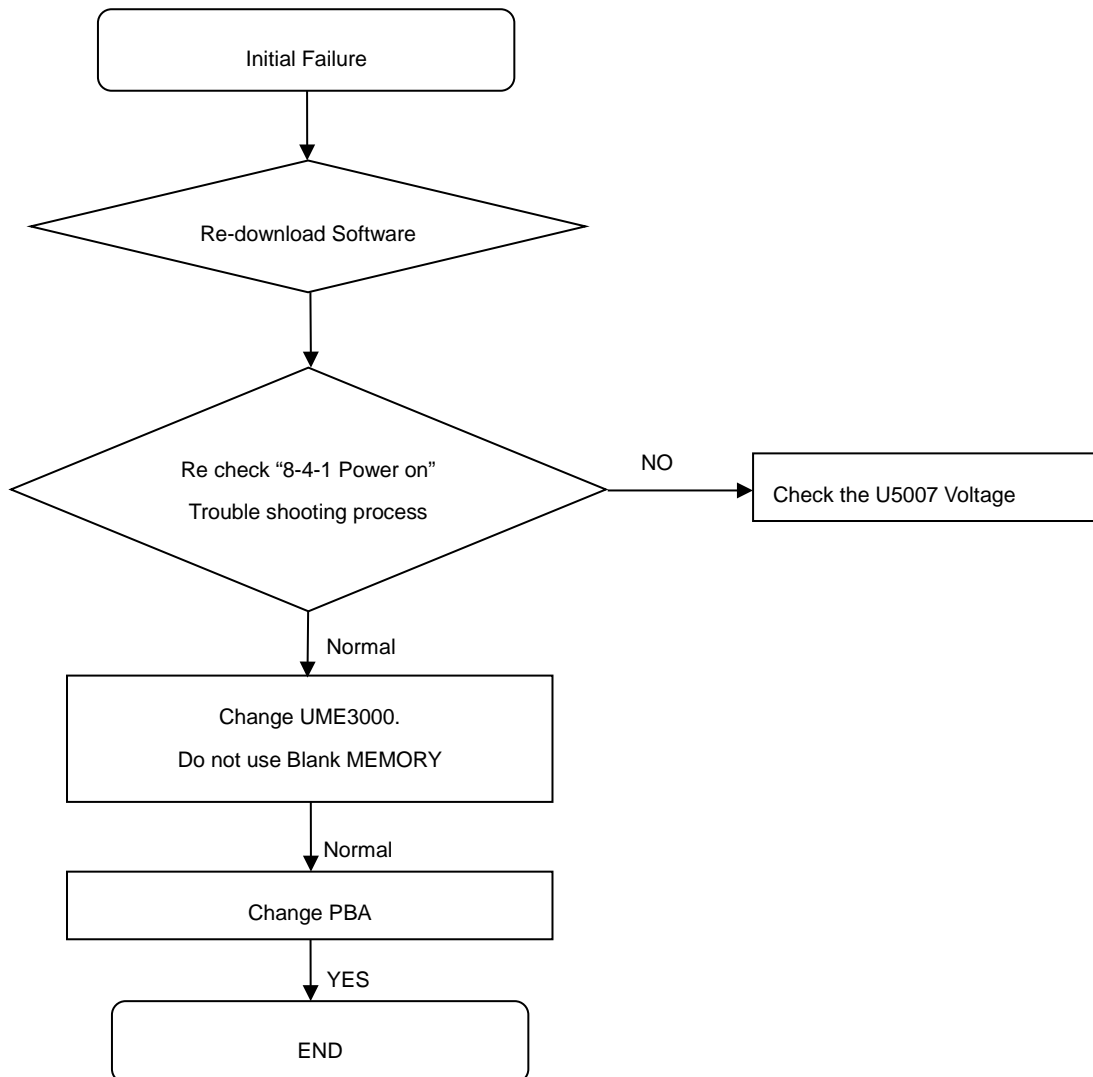
8. Level 3 Repair

8-4-2. Charging Part



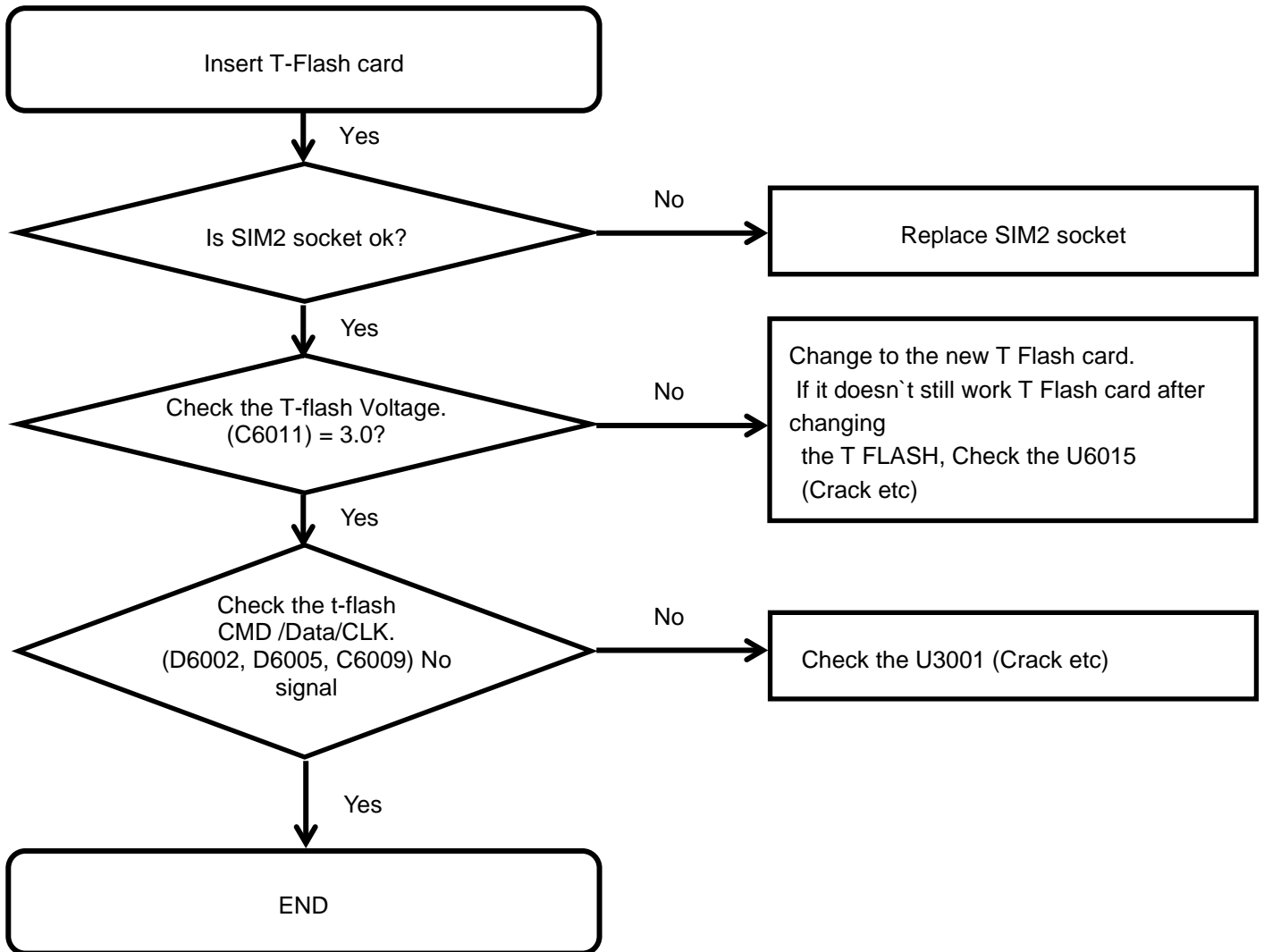
8. Level 3 Repair

8-4-3. initial



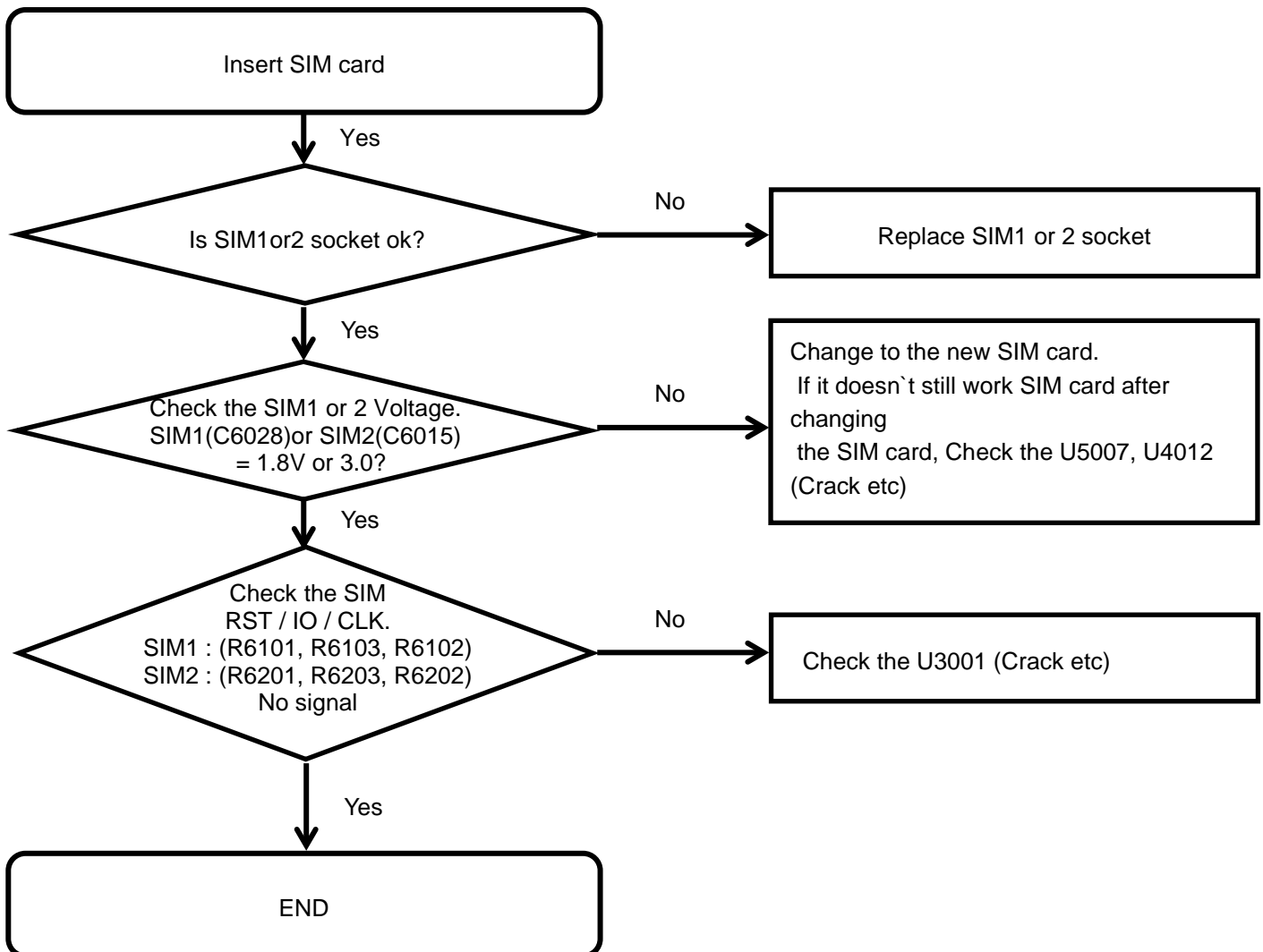
8. Level 3 Repair

8-4-4. T-Flash Part



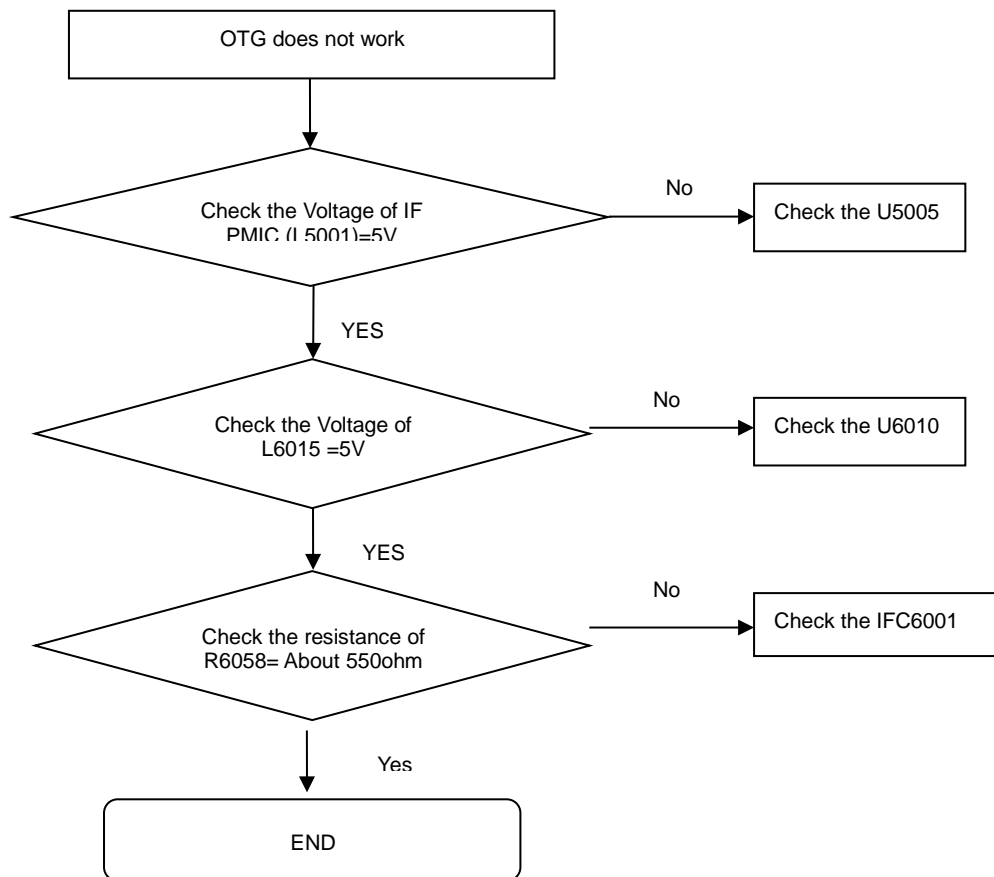
8. Level 3 Repair

8-4-5. SIM PART



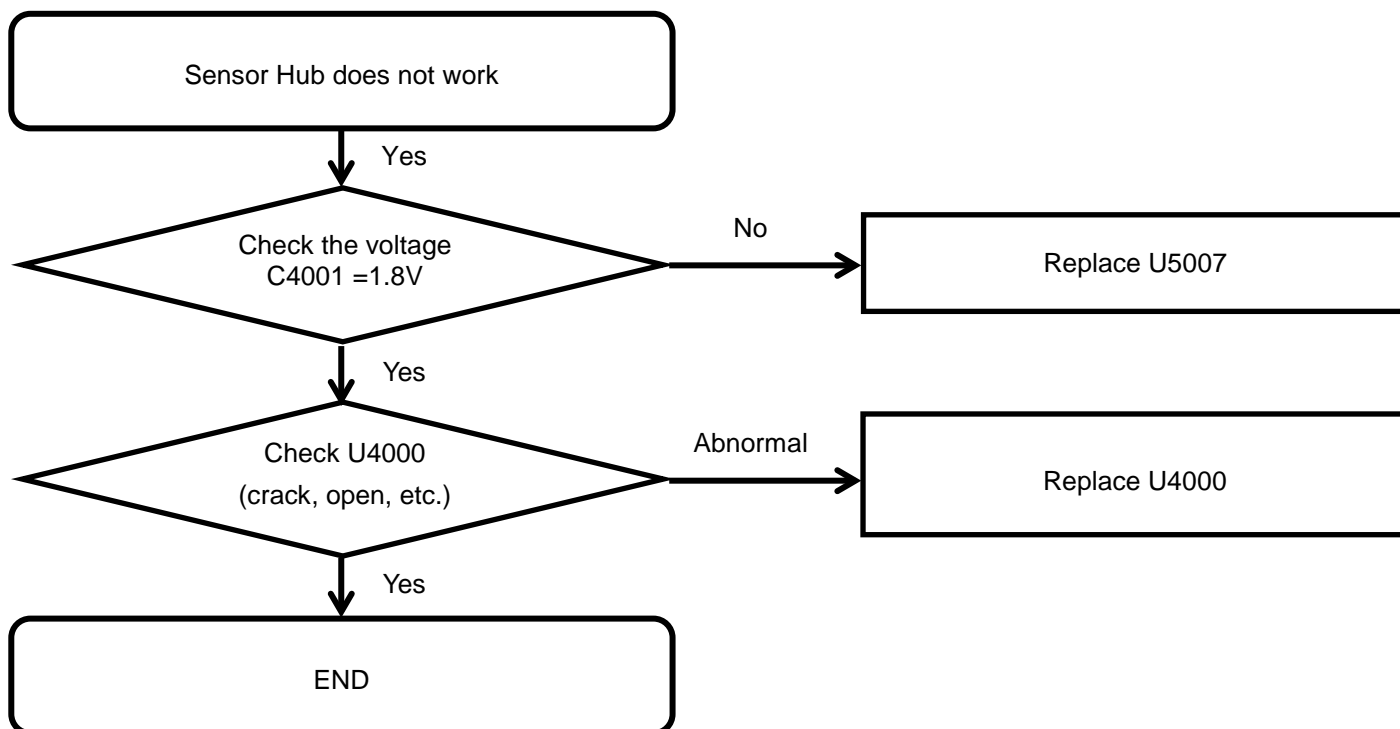
8. Level 3 Repair

8-4-6. OTG



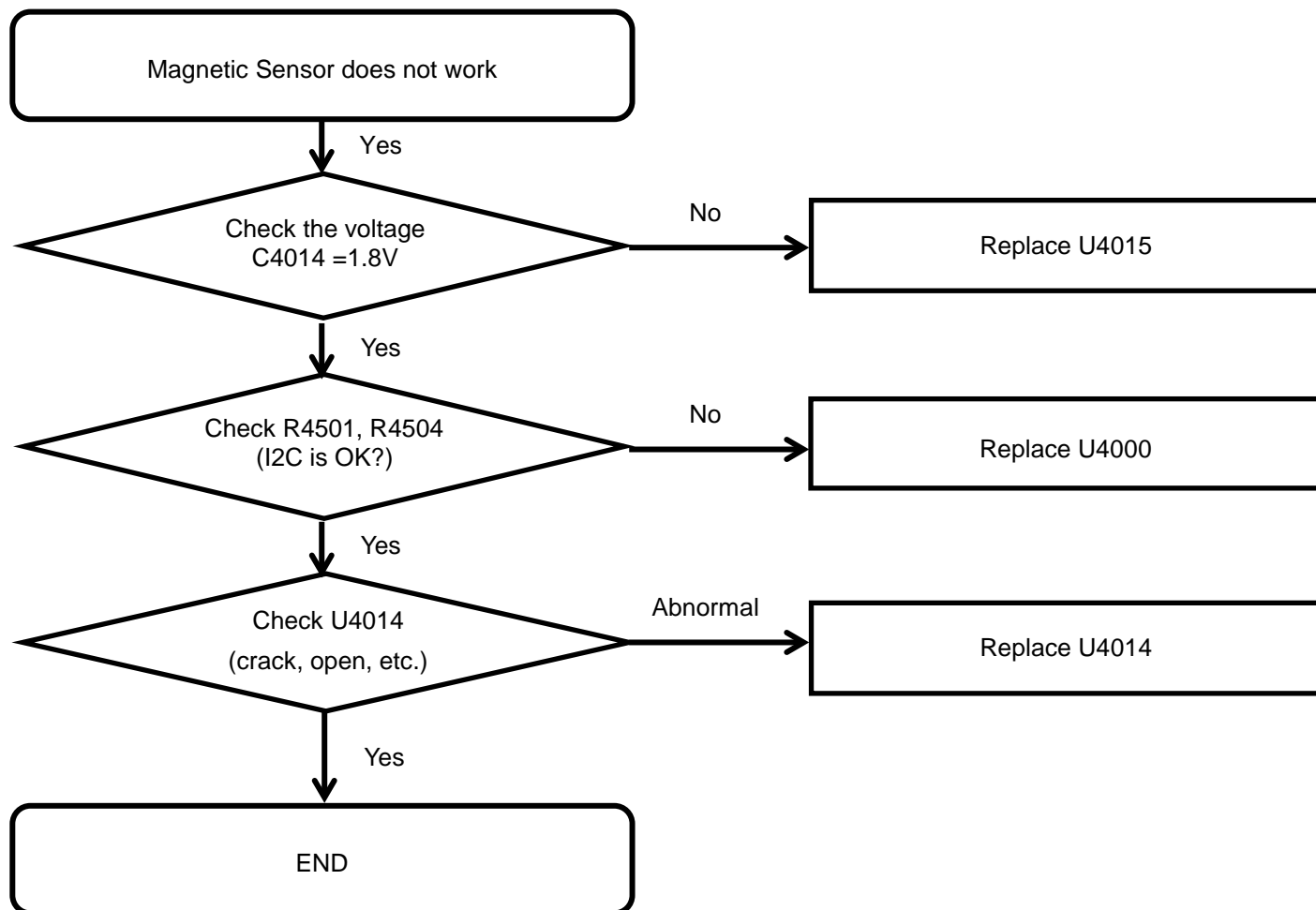
8. Level 3 Repair

8-4-7-1. Sensor Hub



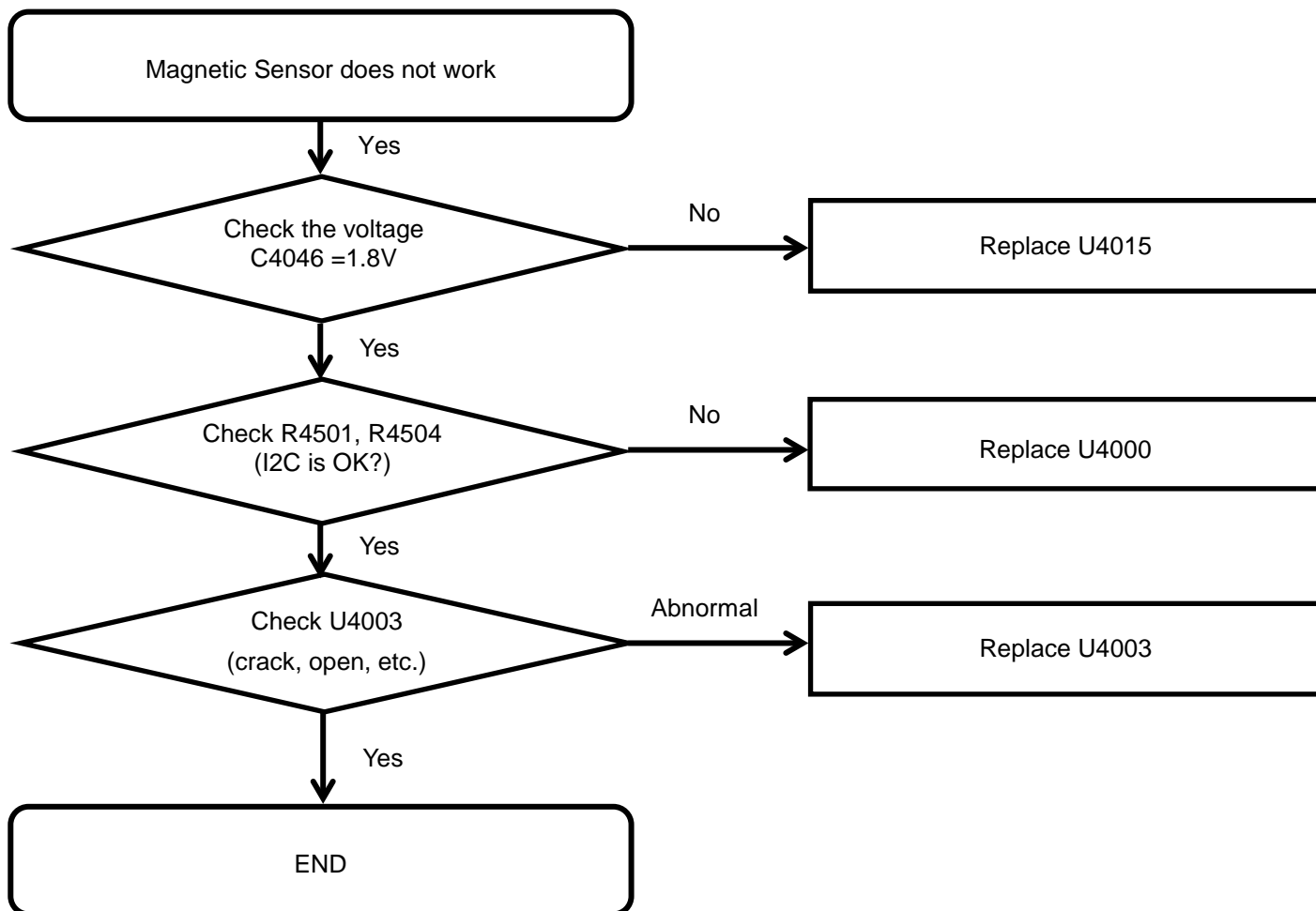
8. Level 3 Repair

8-4-7-2. Magnetic Sensor



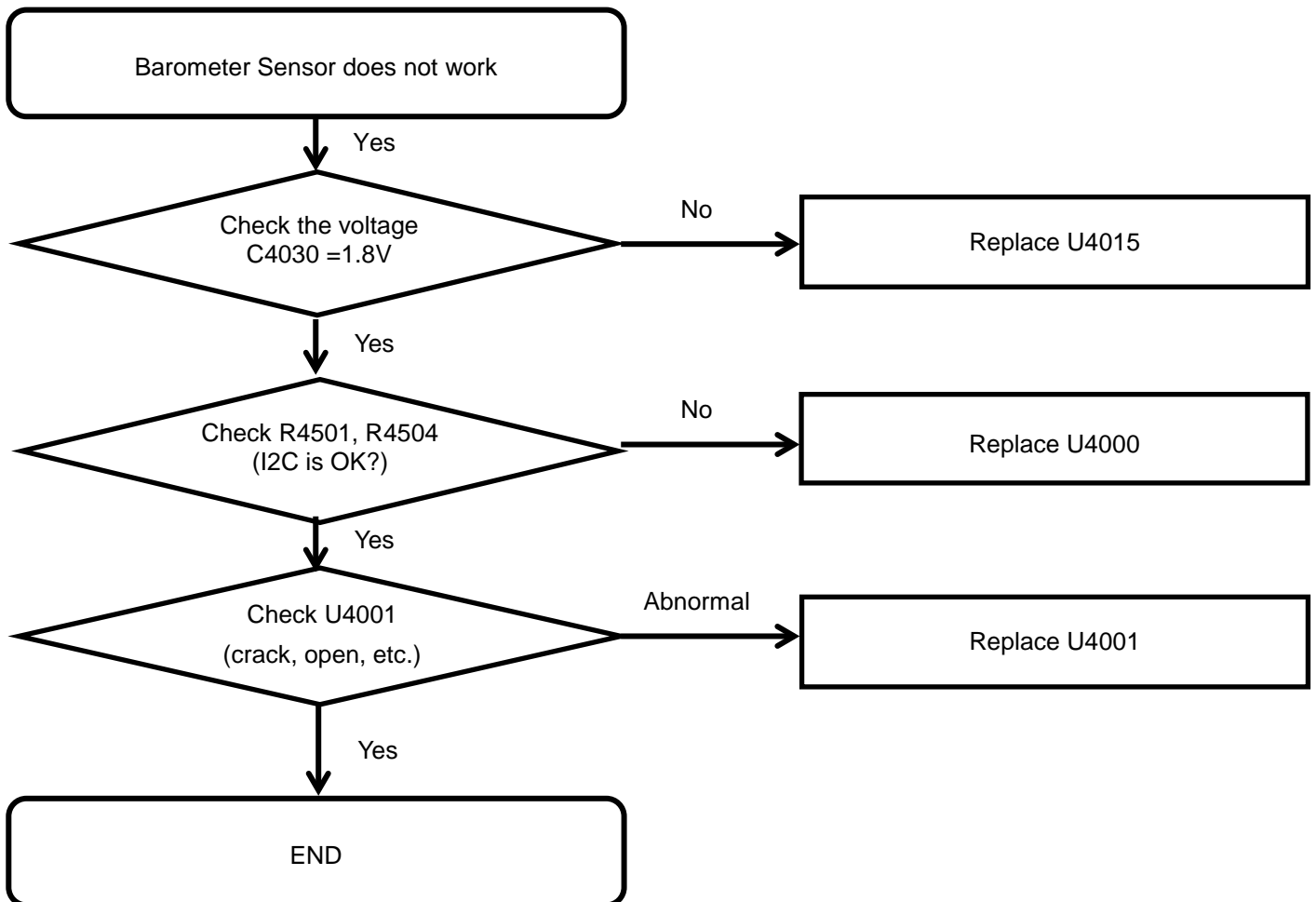
8. Level 3 Repair

8-4-7-3. 6Axis Sensor



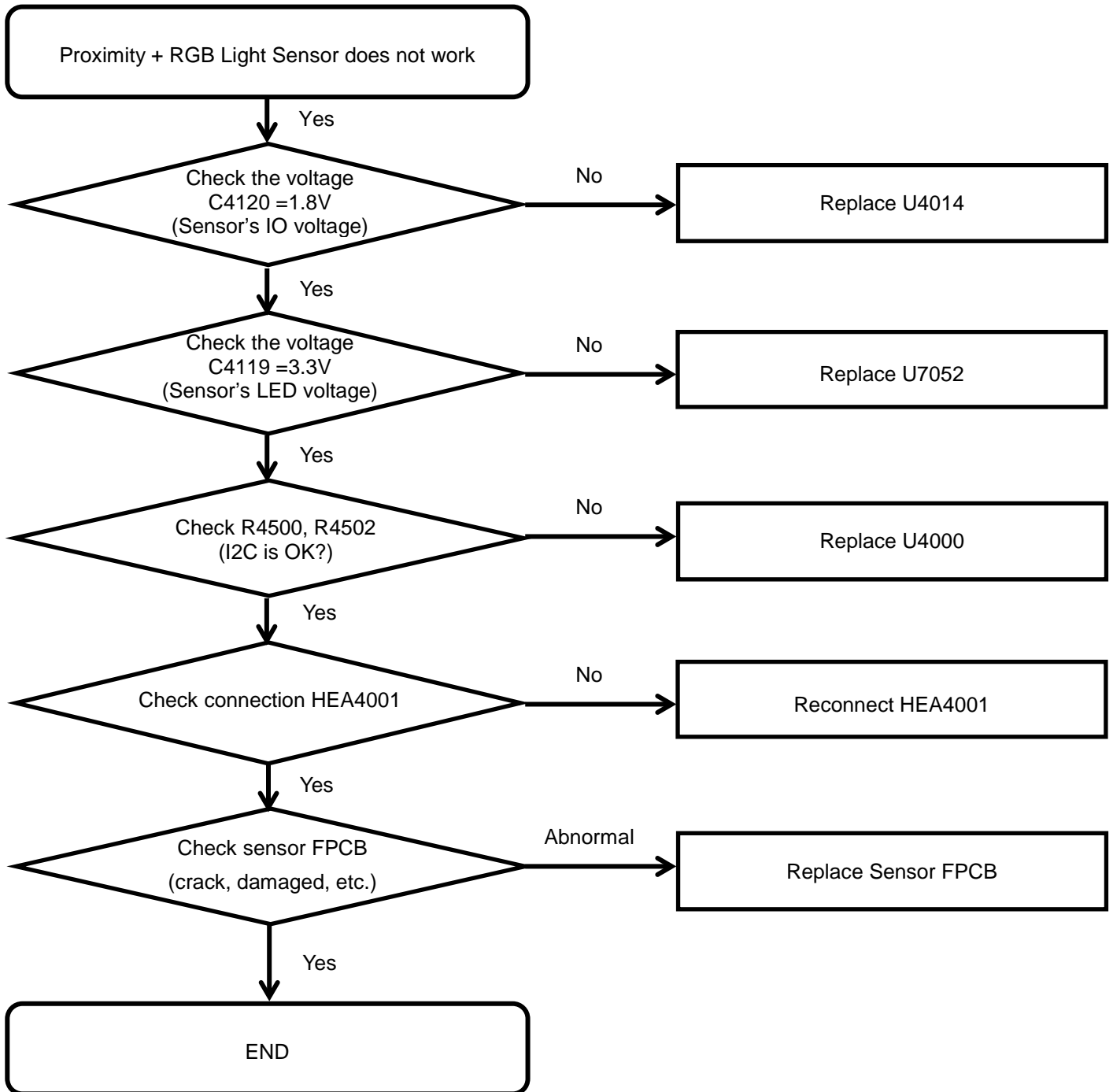
8. Level 3 Repair

8-4-7-4. Pressure sensor



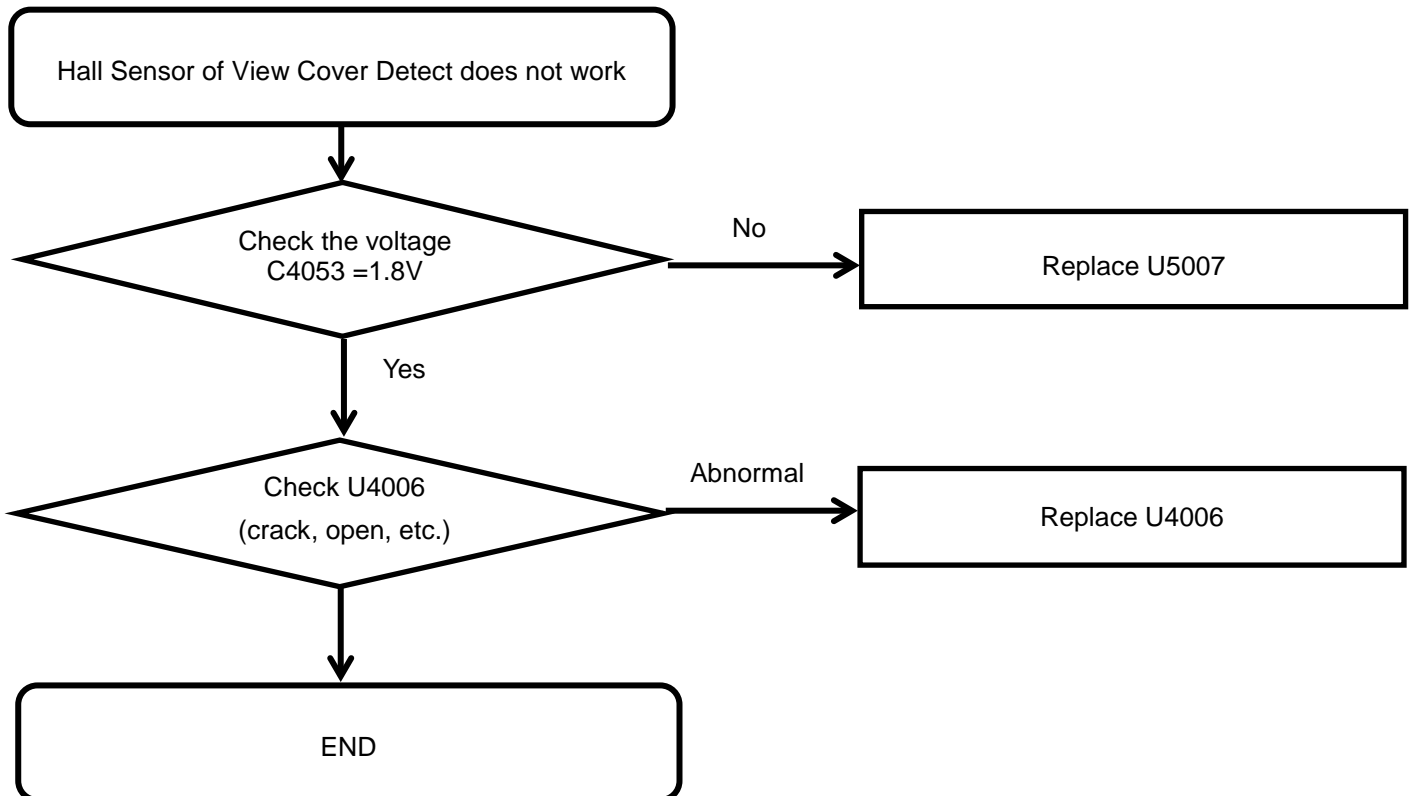
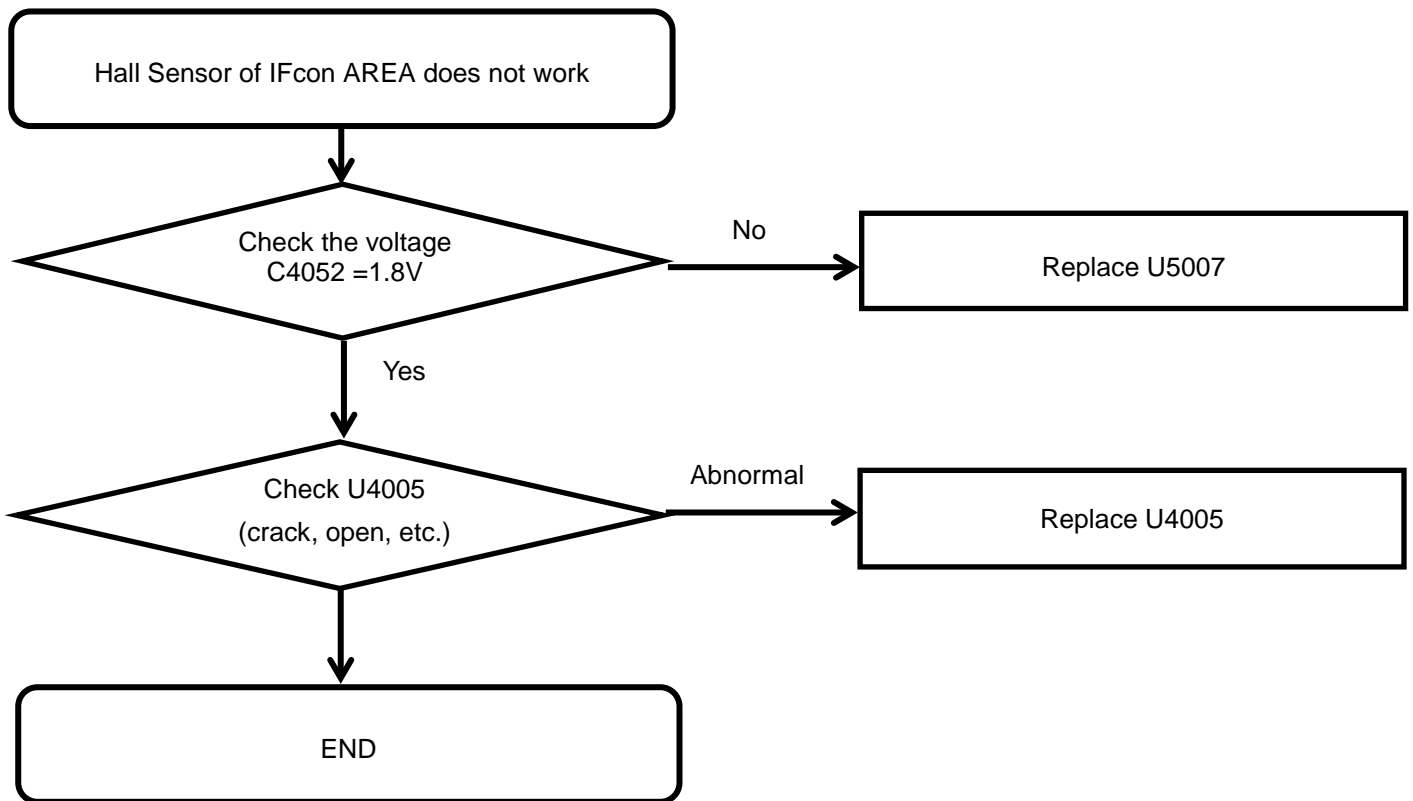
8. Level 3 Repair

8-4-7-5. Proximity + RGB Light sensor



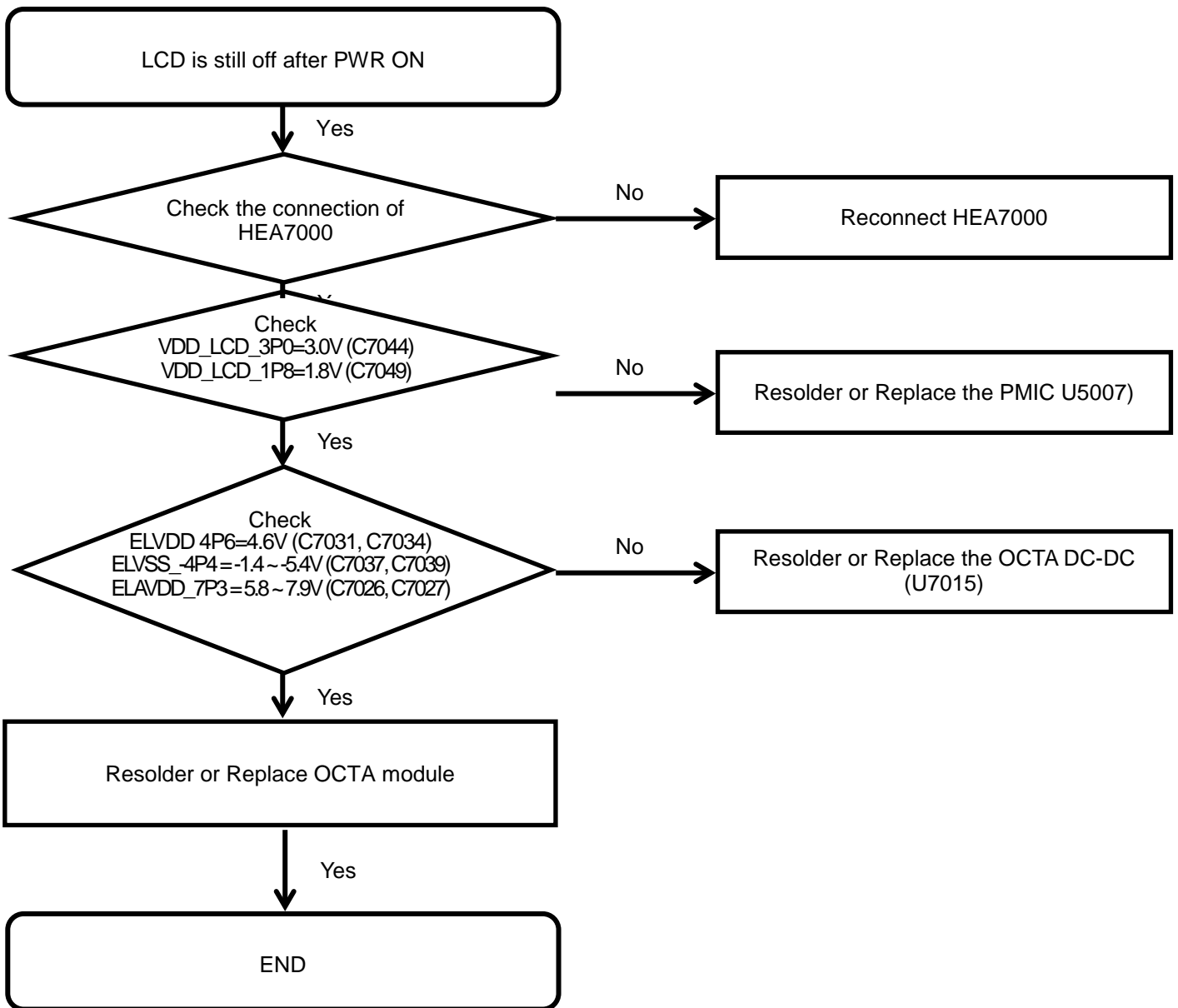
8. Level 3 Repair

8-4-7-6. Hall Sensor



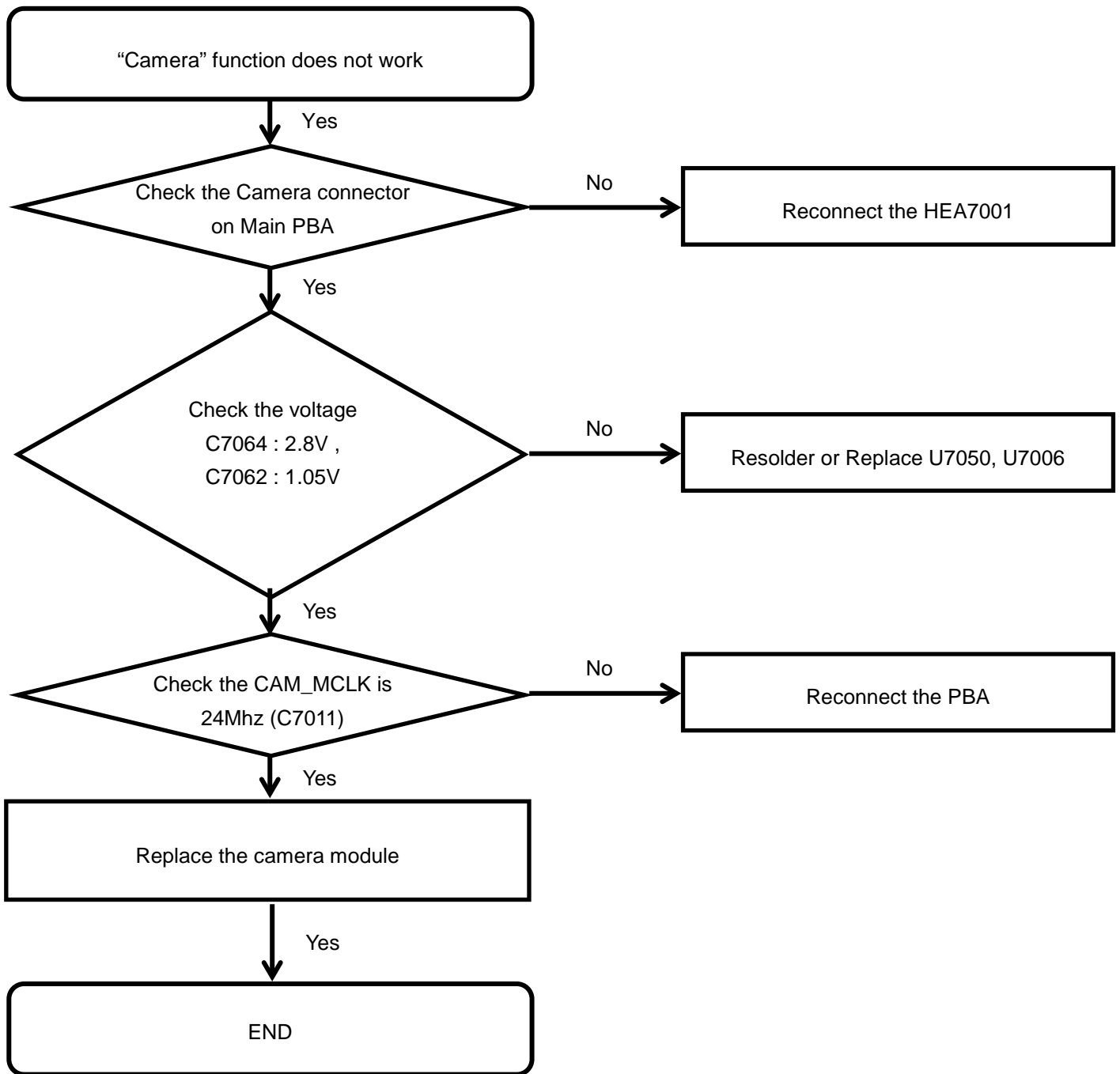
8. Level 3 Repair

8-4-8. OCTA



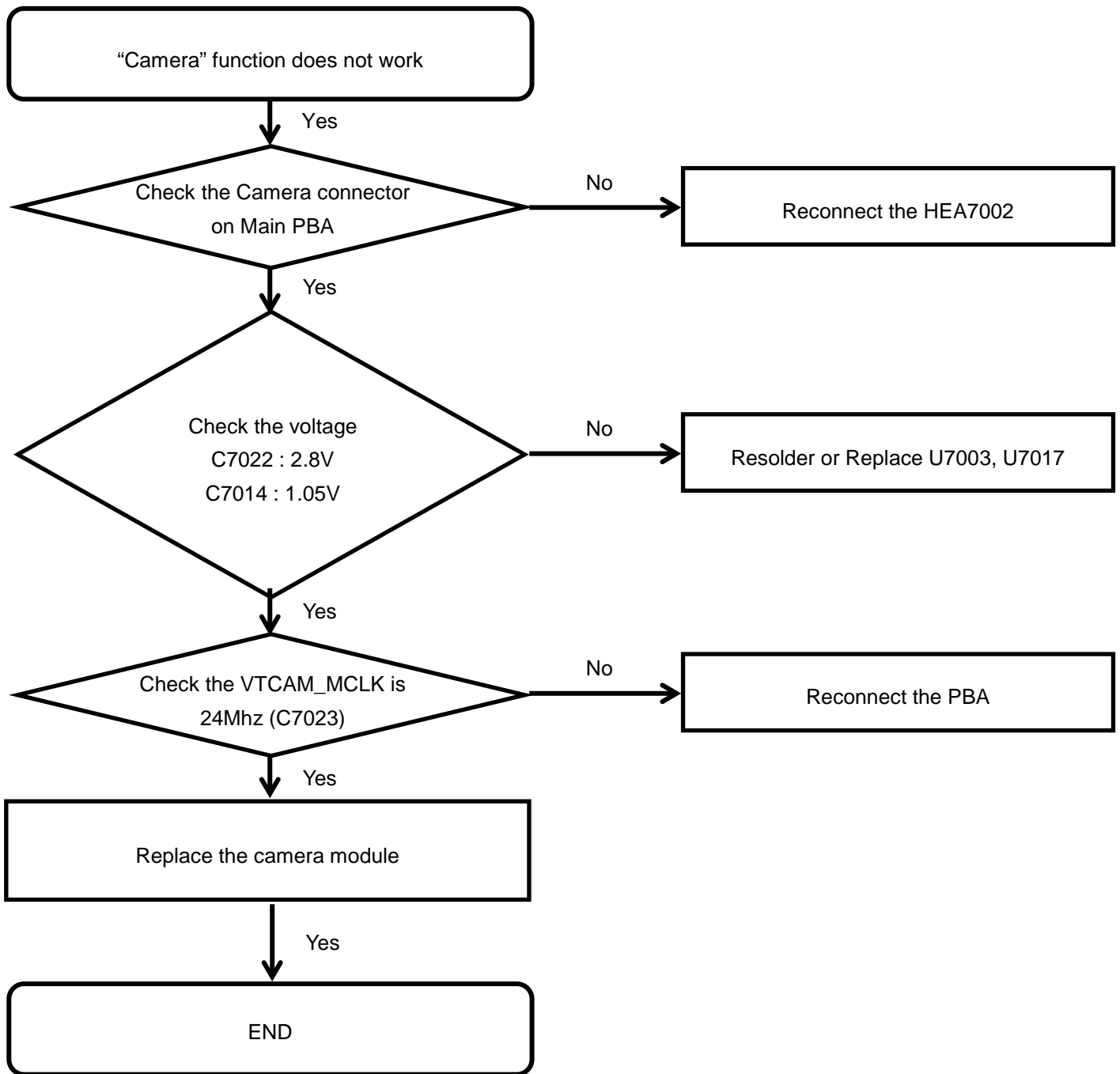
8. Level 3 Repair

8-4-9. Rear CAMERA



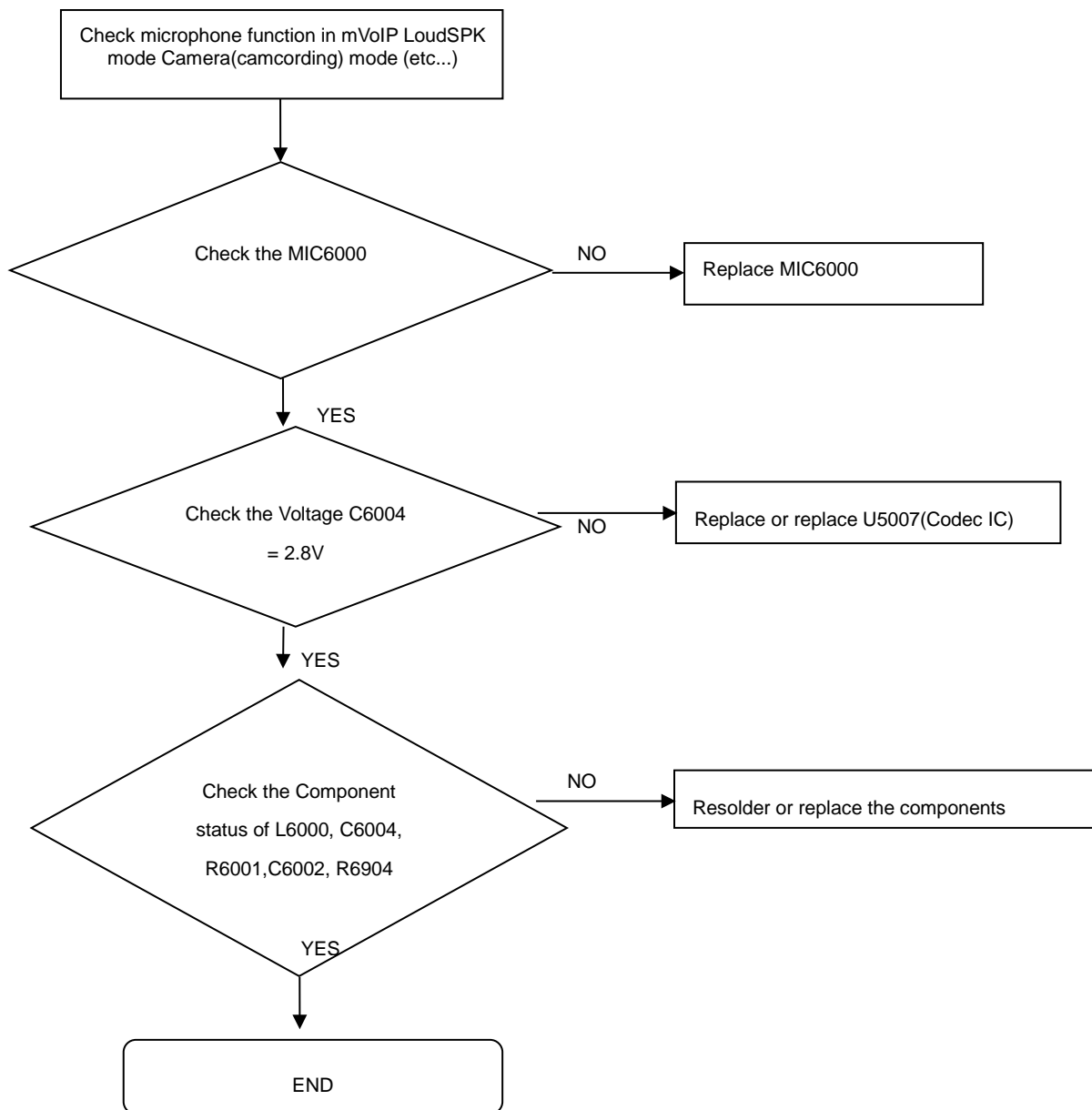
8. Level 3 Repair

8-4-10. Front CAMERA



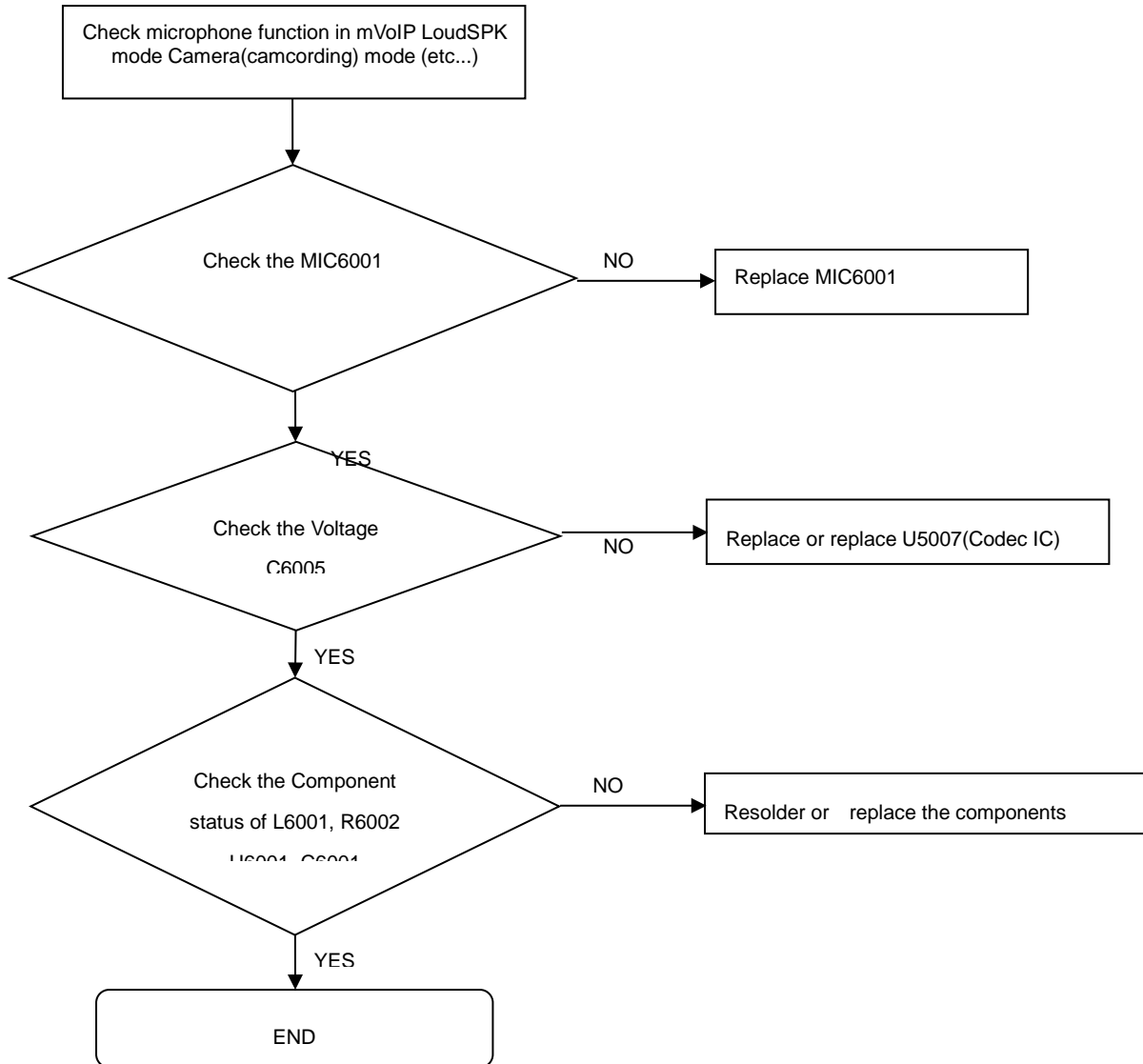
8. Level 3 Repair

8-4-11. Microphone Part – Main MIC



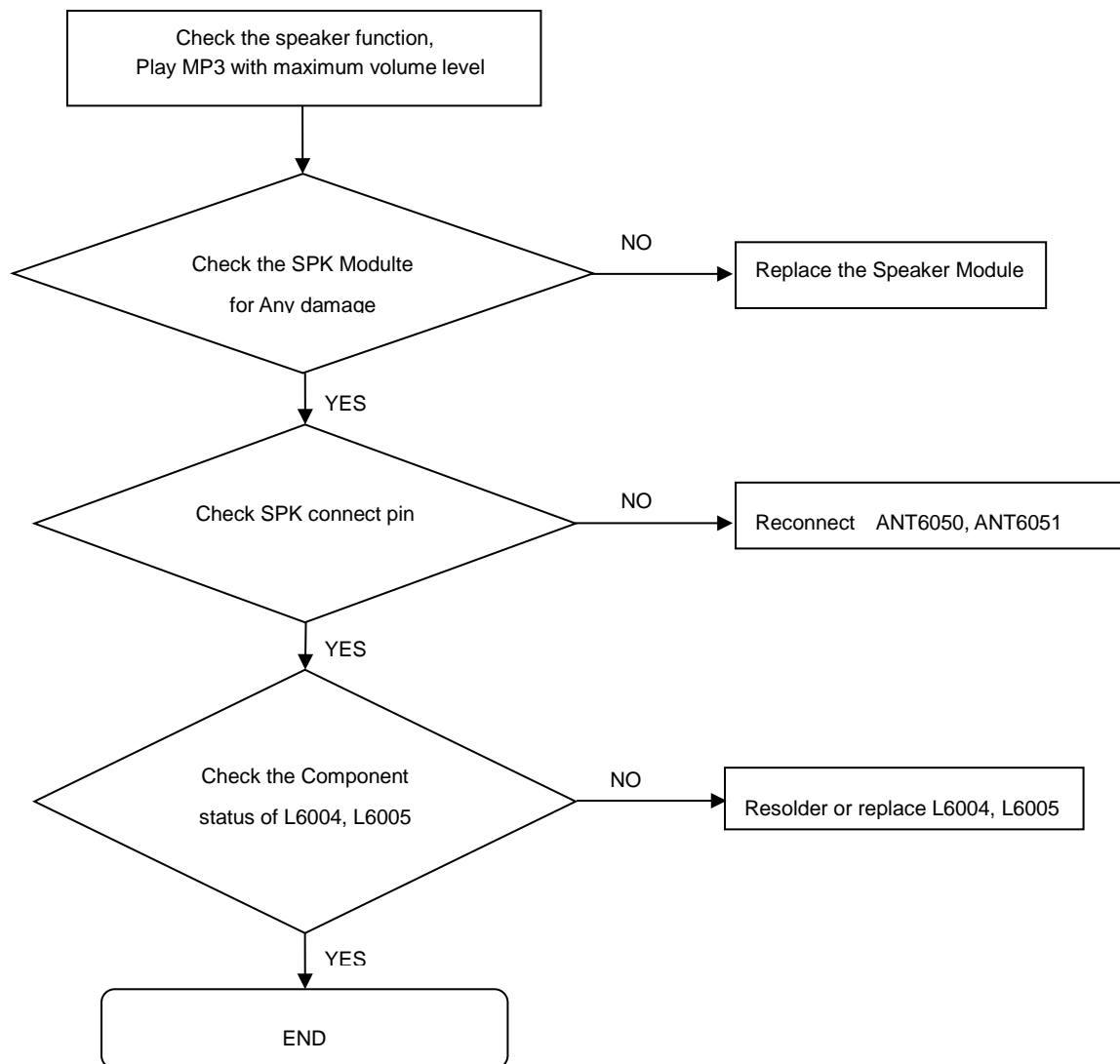
8. Level 3 Repair

8-4-12. Microphone Part – SUB MIC



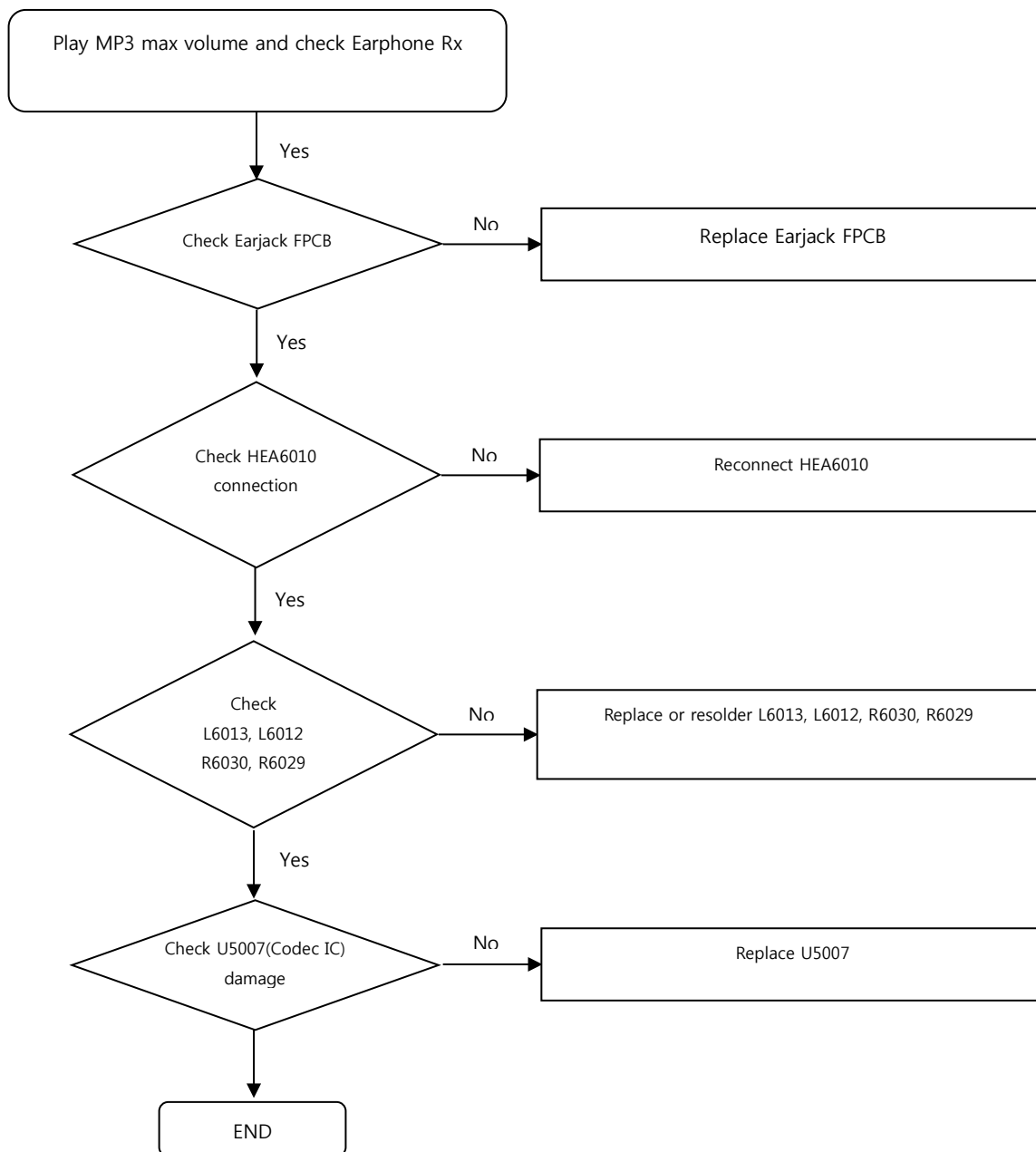
8. Level 3 Repair

8-4-13. Speaker part



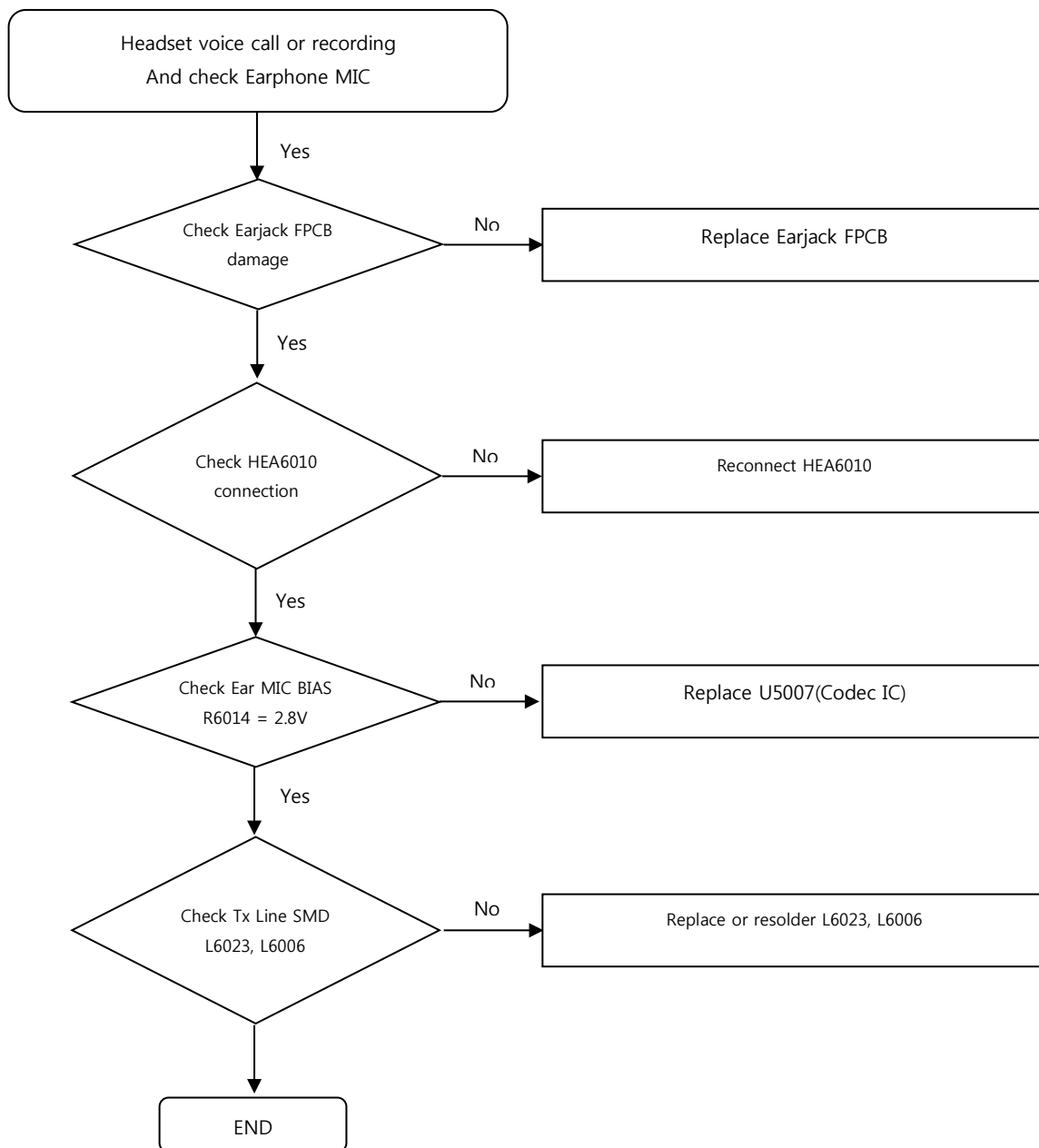
8. Level 3 Repair

8-4-14. Earjack Part - Rx



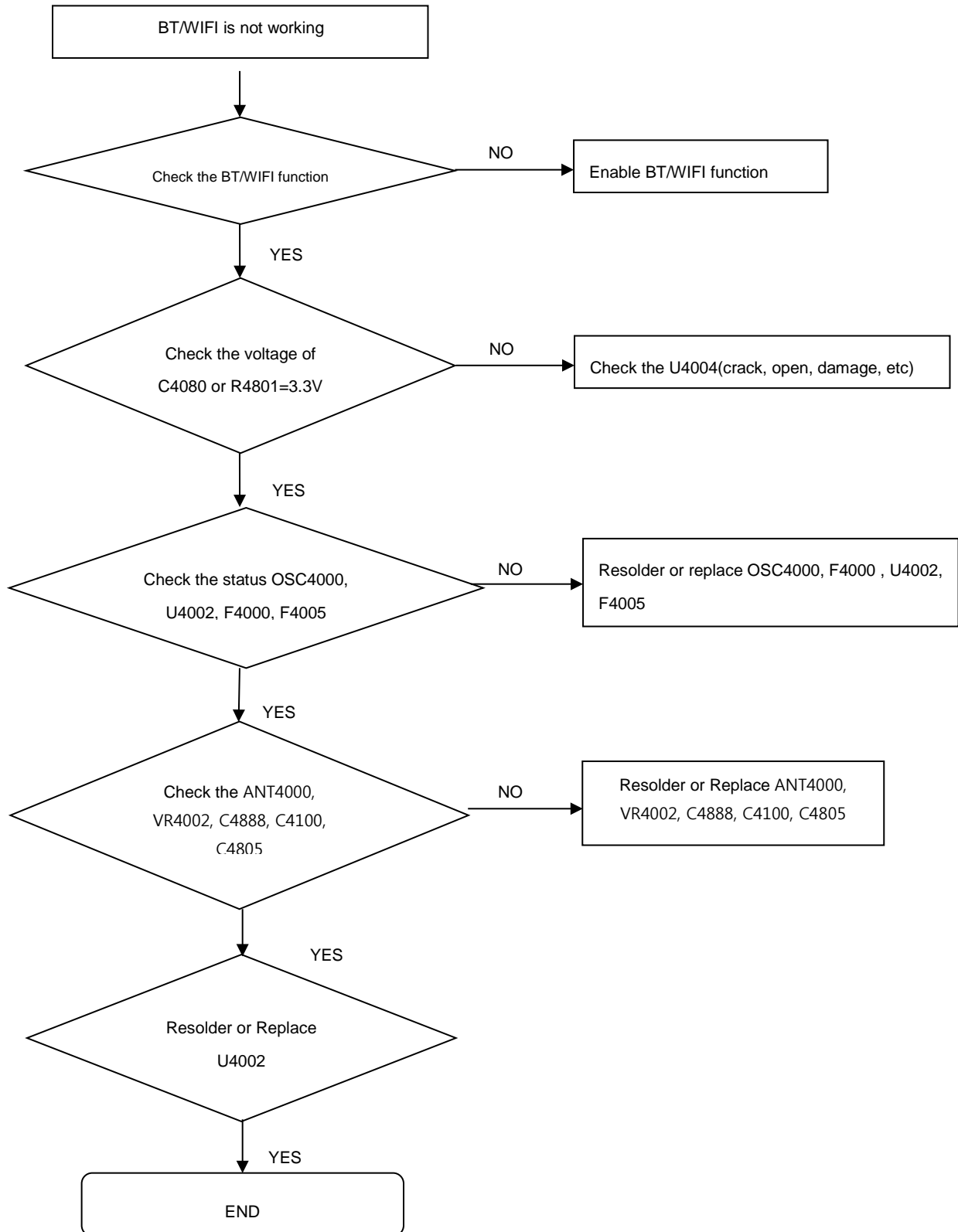
8. Level 3 Repair

8-4-15. Earjack Part - Tx



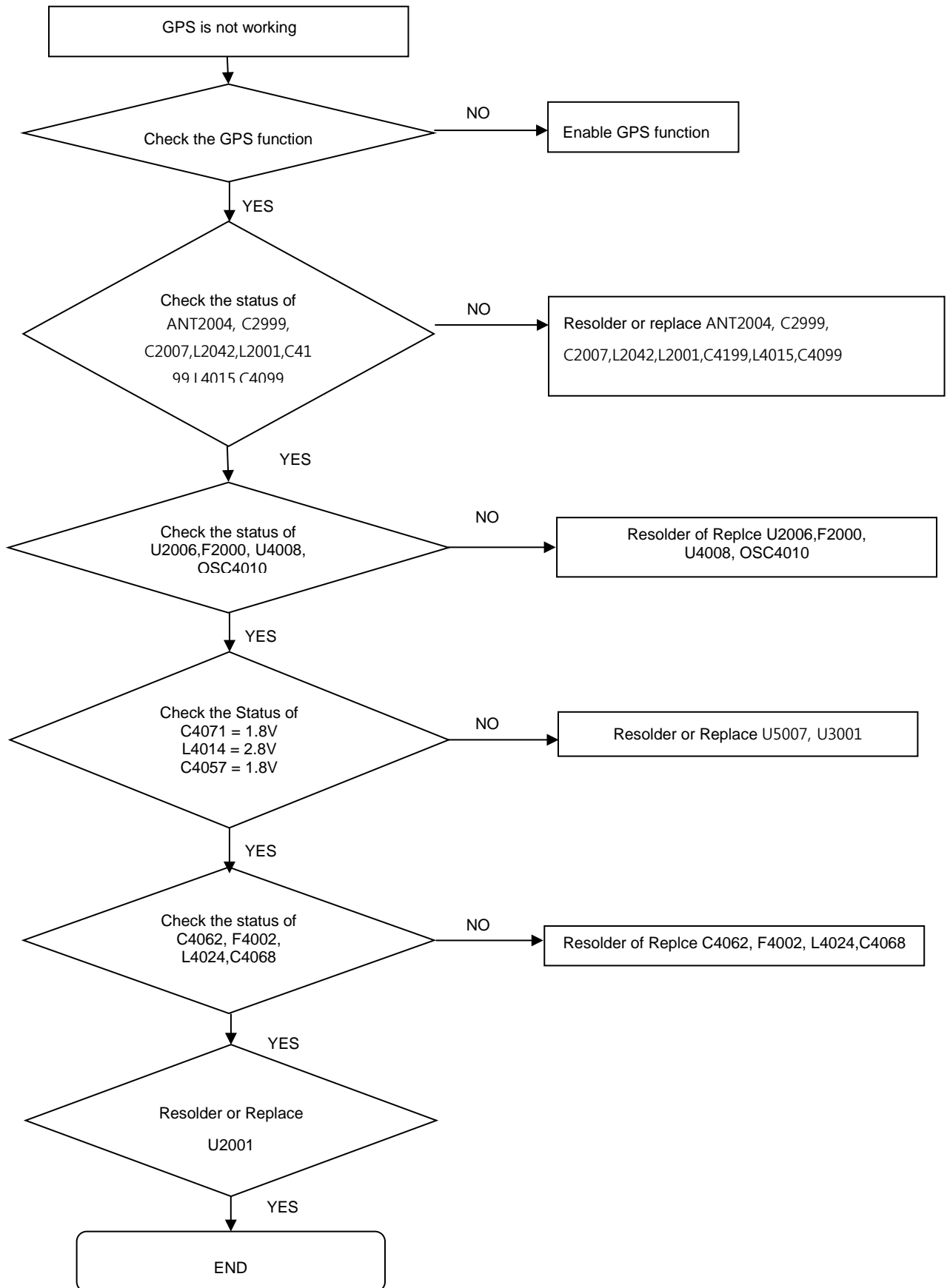
8. Level 3 Repair

8-4-16. BT/WIFI part



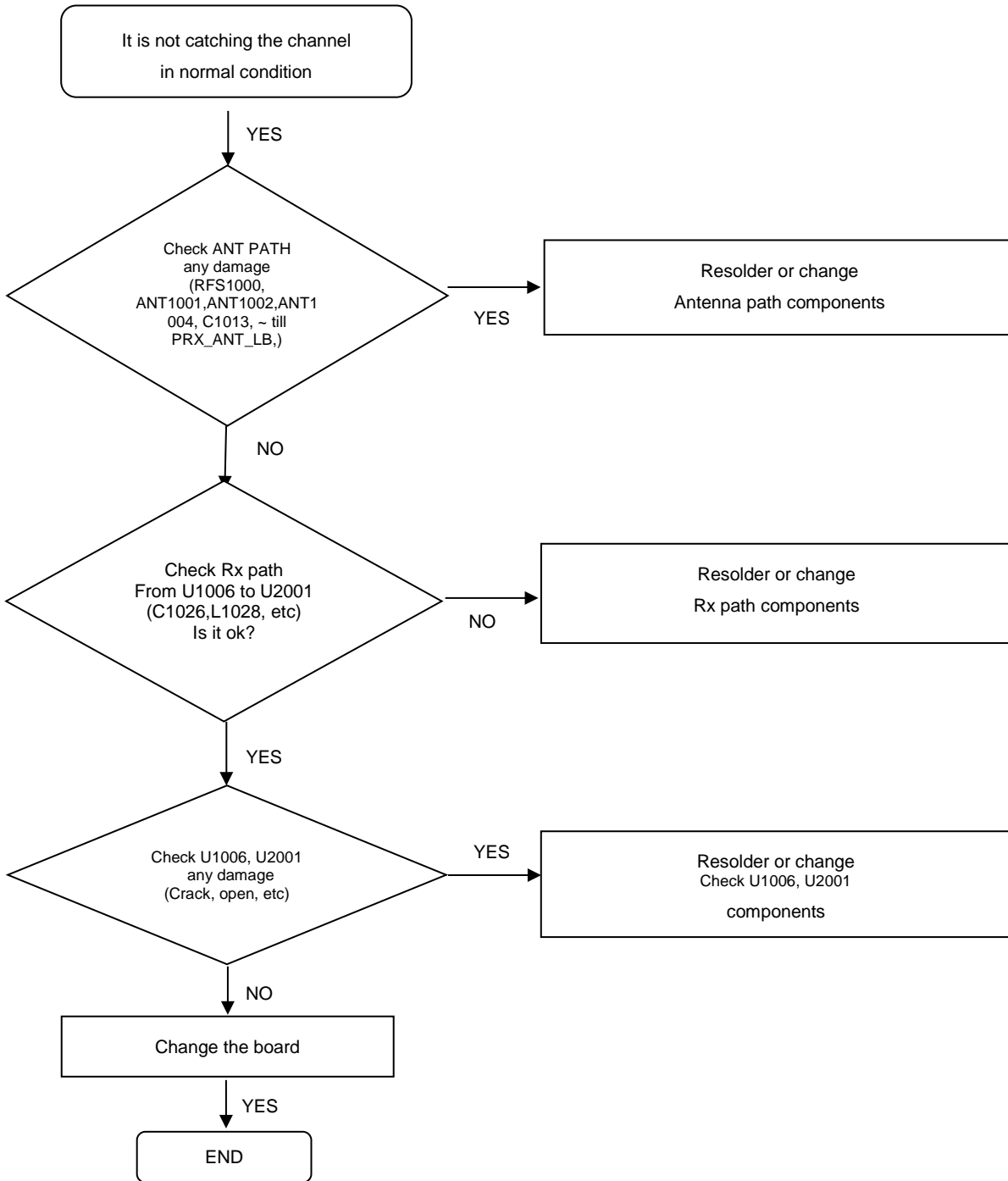
8. Level 3 Repair

8-4-17. GPS part



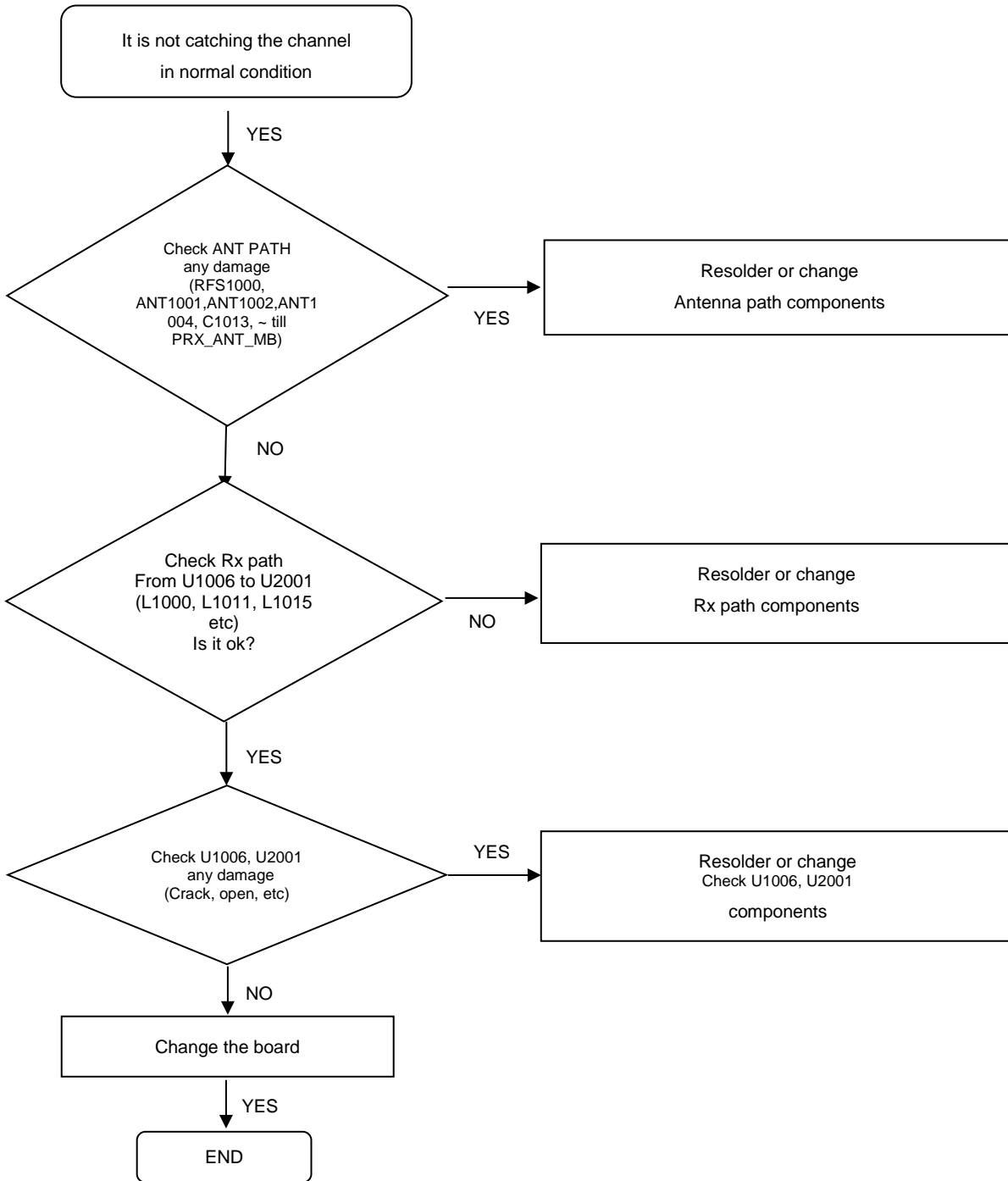
8. Level 3 Repair

8-4-18. LOW BAND RX (GSM850, 900, W5, W8, LTE5, 8, 17, 20, 28)



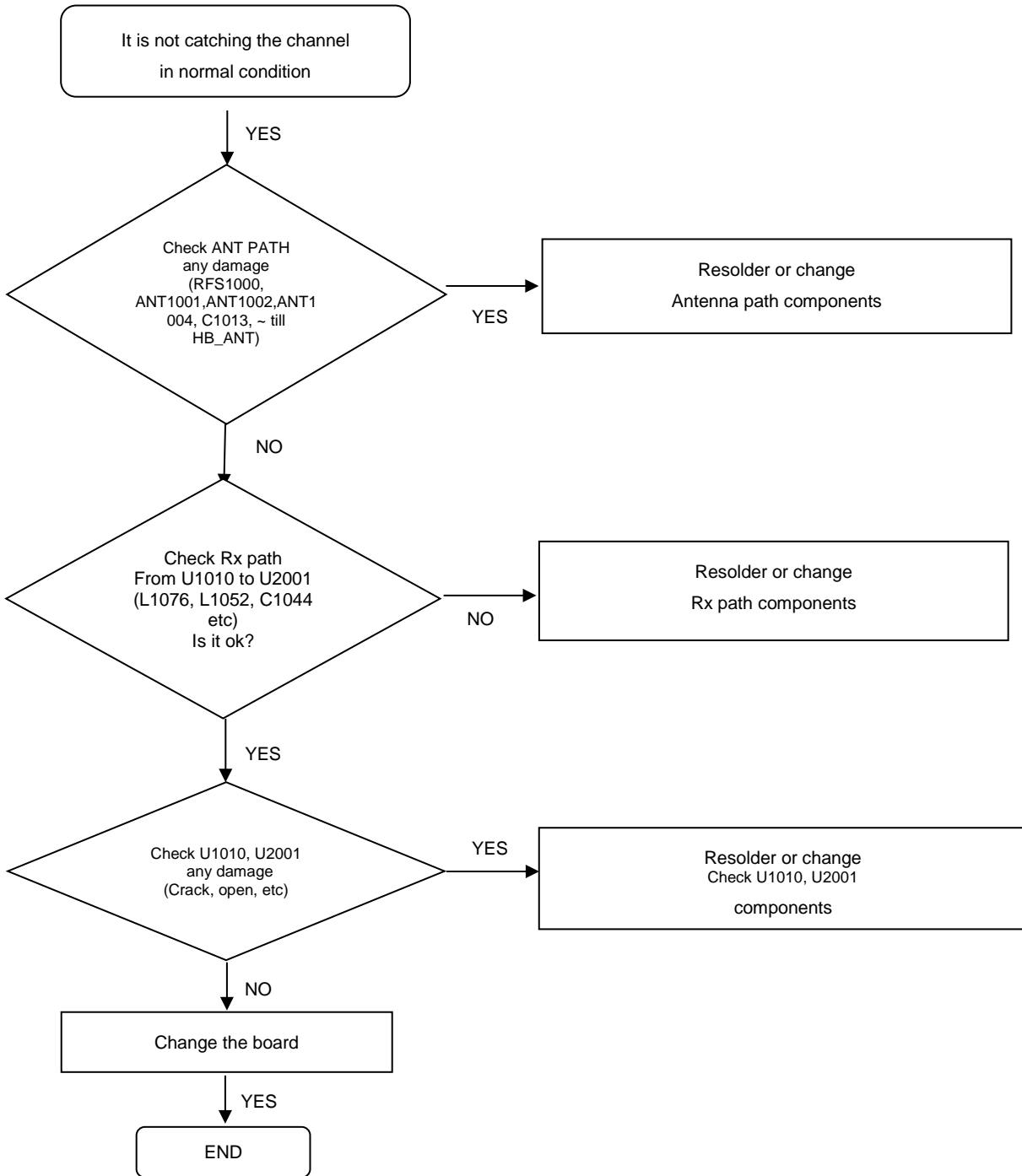
8. Level 3 Repair

8-4-19. MID BAND RX (DCS, PCS, W1, W2, W4, LTE 1,2,3,4)



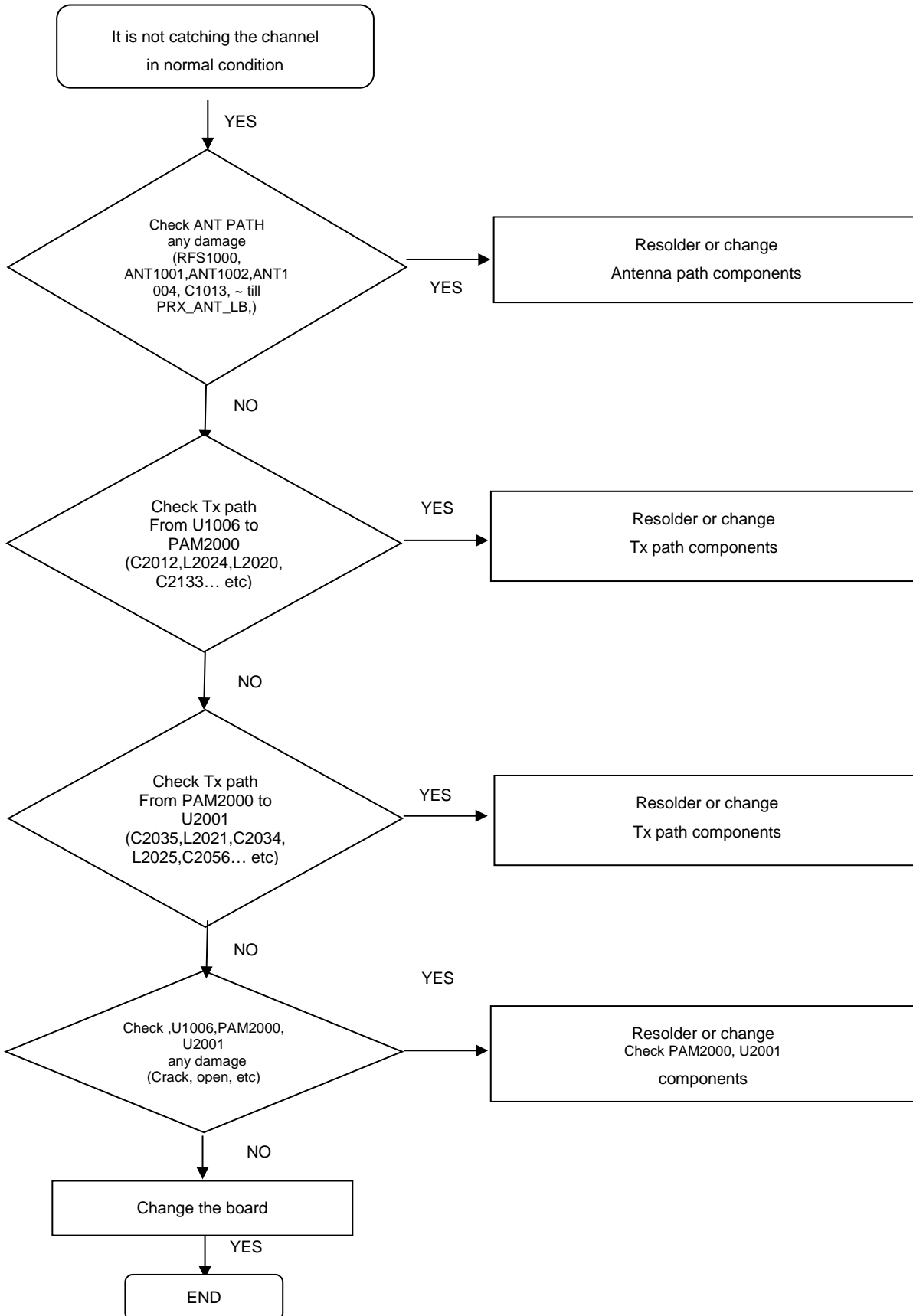
8. Level 3 Repair

8-4-20. HIGH BAND RX (LTE 7,38,40,41)



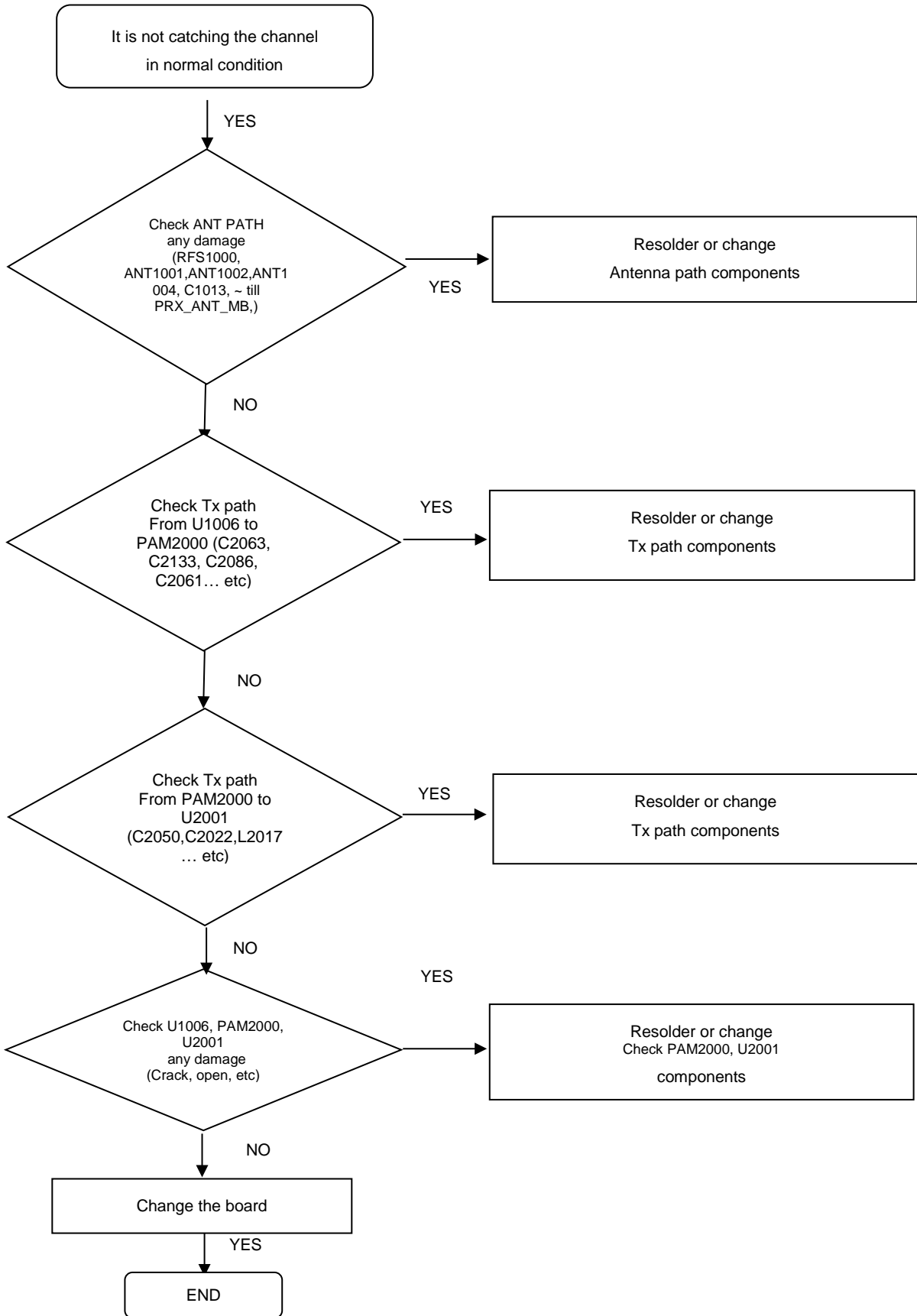
8. Level 3 Repair

8-4-21. LOW BAND TX (GSM850, 900, W5, W8, LTE5, 8, 17, 20, 28)



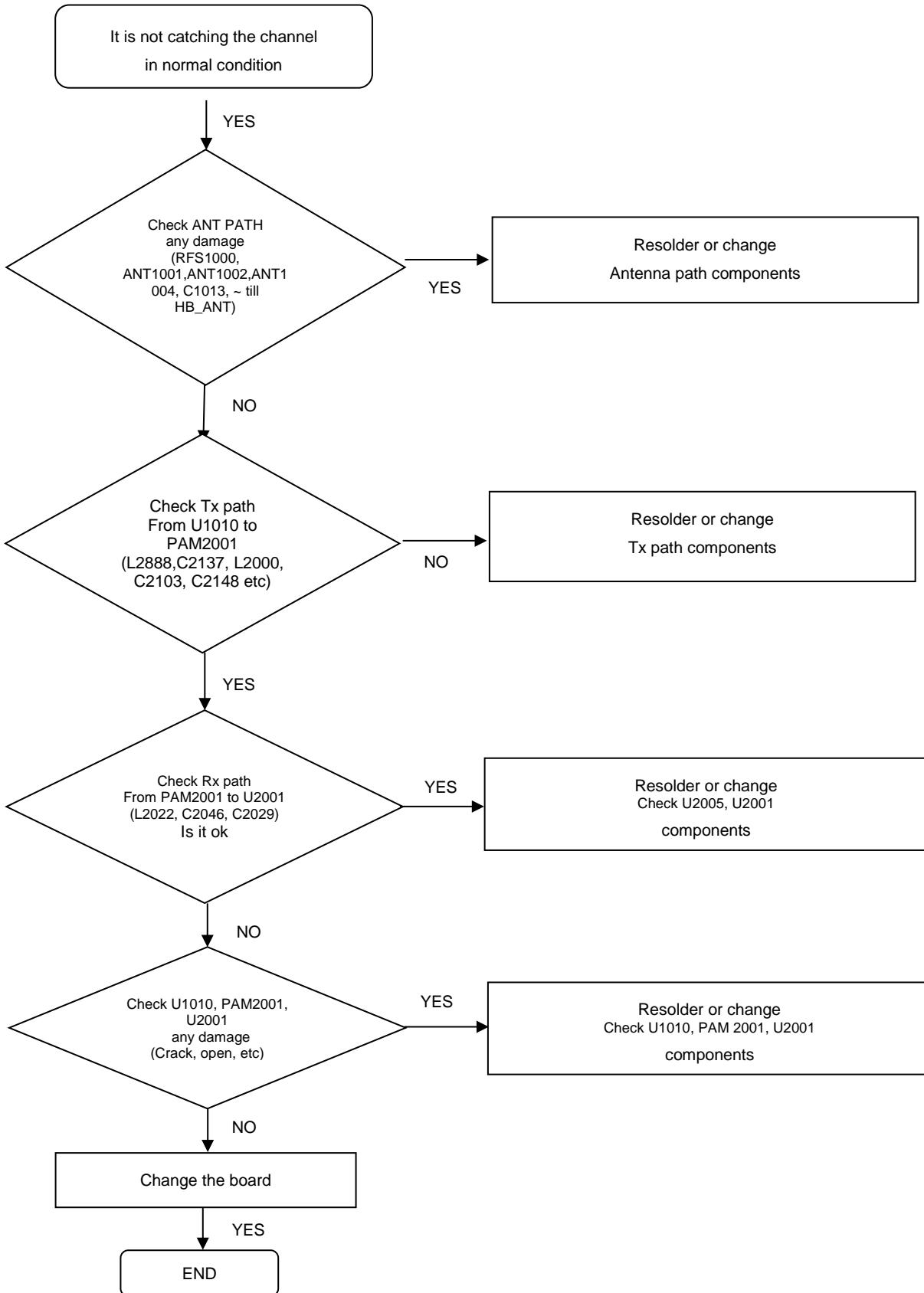
8. Level 3 Repair

8-4-22. MID BAND TX (DCS, PCS, W1, W2, W4, LTE 1, 2, 3, 4)



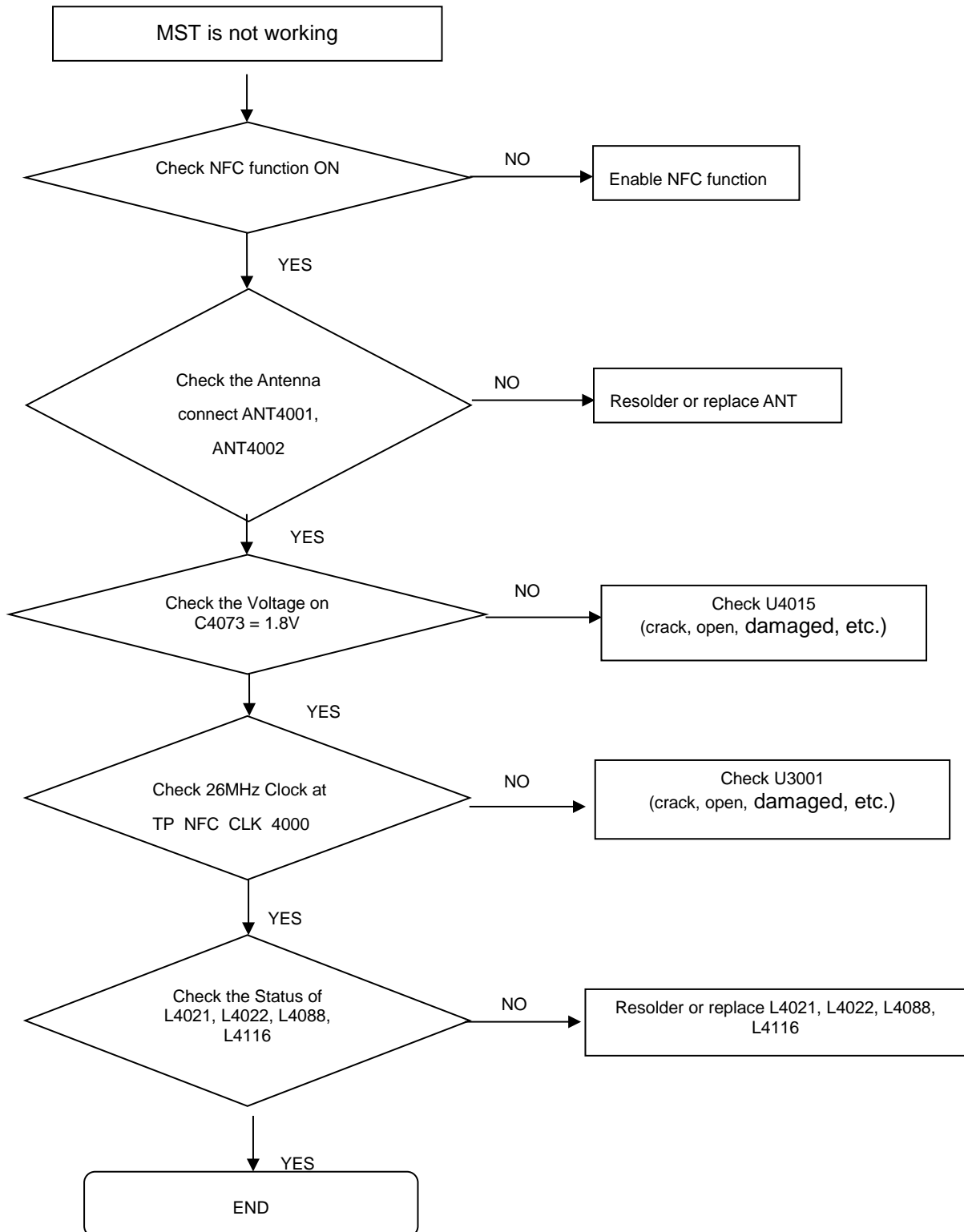
8. Level 3 Repair

8-4-23. HIGH BAND TX (LTE 7,38,40,41)



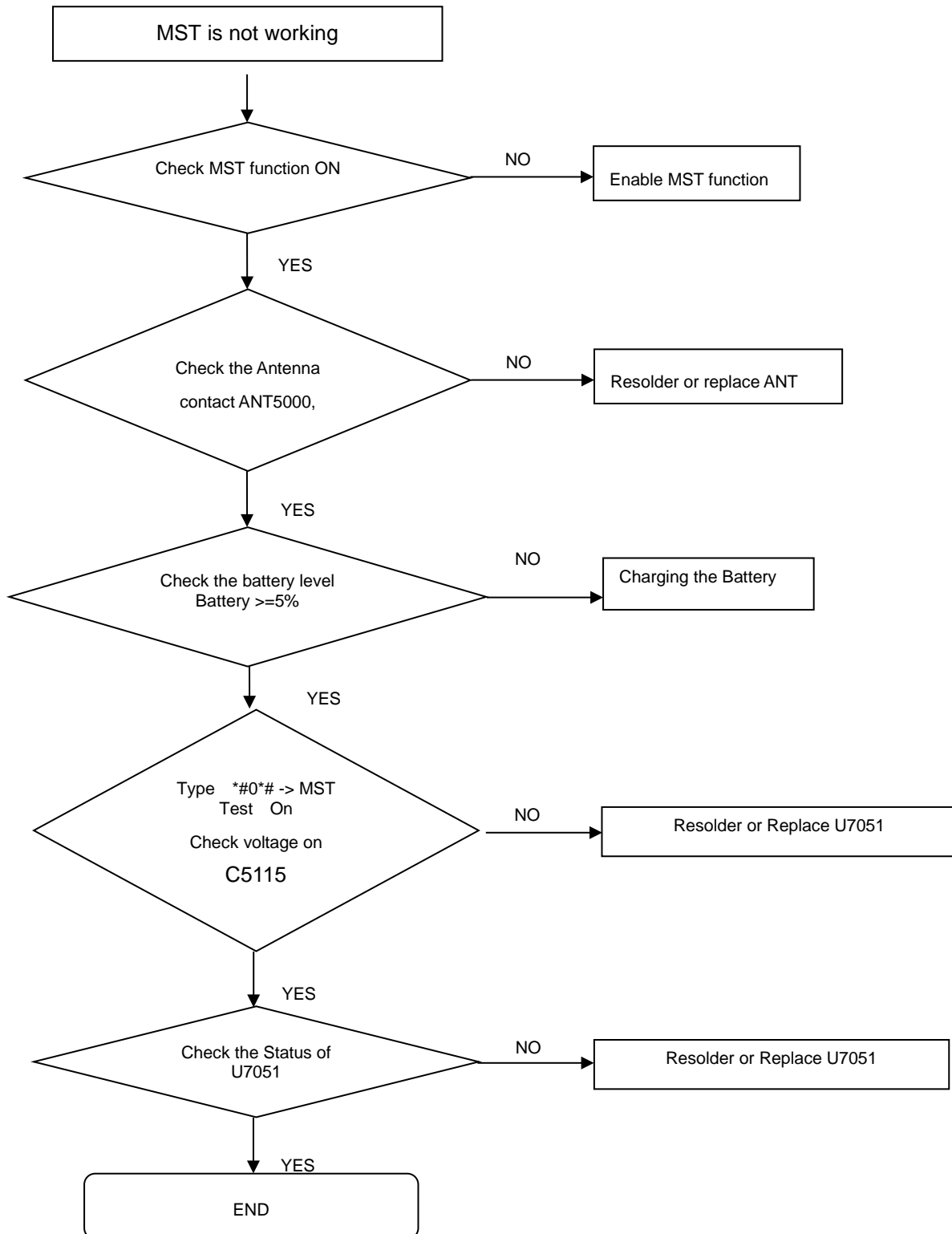
8. Level 3 Repair

8-4-24. NFC



8. Level 3 Repair

8-4-25. MST



8. Level 3 Repair

8-4-26. FM radio part

